

Mixed cable installation in cable trays



Mixed cable installation in cable trays



This guide covers the cable tray types and their appropriate applications, the fill rules for each configuration, ampacity derating requirements, separation of power and signal cables, and the ...



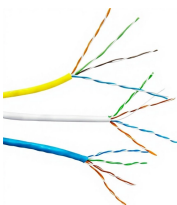
This document lists the most typical mistakes that EPC teams should not make while installing instrumentation cable trays to make sure the plant runs ...



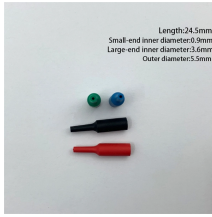
A practical guide to product selection and installation This guide for engineers and installers has been developed by ABB as a practical reference regarding cable tray characteristics, installation, and ...



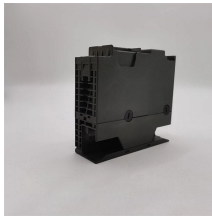
This guide covers the critical steps, from selecting the right electrical cable tray and performing accurate cable fill calculations to managing a safe cable pull through and ensuring all bonding and grounding ...



This document lists the most typical mistakes that EPC teams should not make while installing instrumentation cable trays to make sure the plant runs smoothly, is safe, and is in ...



Learn the best practices for installing cables in trays. This guide covers essential steps, technical requirements, and key details for efficient cable tray installation.



When installing any mixture of cables in a cable tray, adherence to NEC 392.22 (A) (1) (a) is essential. No. 4/0 AWG or larger conductors must be placed side by side without stacking, ...



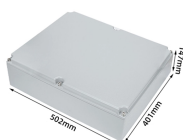
When you're installing single-conductor cables in a ladder-type cable tray, and you're mixing large conductors (≥ 1000 kcmil) with smaller ones (< 1000 kcmil), the National Electrical Code ...



Scenario 2 - Could MC (600V) and MC (300V) cables be present in the same tray with no barrier if the highest applied voltage is 480V? In this case, the 300V rated MC would be industrial CAT6.



Core rules for selecting, installing, grounding, and filling cable trays—clearances, materials, separation, and bonding explained.



Although cable tray installation is virtually maintenance free under normal conditions, inspection of cable tray installations is recommended as part of a facility's routine maintenance schedule for electrical ...



When you're installing single-conductor cables in a ladder-type cable tray, and you're mixing large conductors (≥ 1000 kcmil) with smaller ones (< 1000 kcmil), the ...

Contact Us

For more information, pricing, or custom data center solutions, please contact us:

Website: <https://www.yoahorroenergia.es>

Email: hello@yoahorroenergia.es

Phone: +233 54 318 7269

Address: Plot 28, Spintex Road, Accra, Greater Accra, Ghana

This document is for informational purposes only. Specifications subject to change without notice.

