

Minimum distance between 10kV busbars



Overview

Spacings between Busbars: The spacings between busbars are critical to prevent electrical shock and ensure safe operation. These clearances help prevent arcing, short circuits, and. If you can place bare conductors 1/2" apart and meet the test requirements for 15kV equipment, that is fine. And before you conclude that I'm being ridiculous, remember that we do this every day in vacuum interrupters. The first is. Each bus bar is spaced 1. 6" with the panel doors closed. This dimension is the one that concerns me and has ultimately led me to. The IEC 61439 standard applies to busbars, especially when they are part of low-voltage switchgear and control gear assemblies, e. Figure 1: Busbar Standard The IEC 61439 standard applies to busbar assemblies that will be installed in electrical applications with a. Clearance is the shortest distance through air between conductive parts; in design terms, it is driven mainly by transient stress, rated impulse withstand voltage (U_{imp}), and altitude. This table is now included in the new annex, which formally makes this.

Minimum distance between 10kV busbars



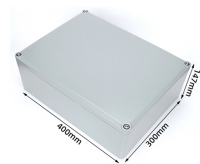
When considering bus spacings, two dimensions are important. The first is clearance, or the distance through air between conductors of opposite polarity or between an energized conductor and ground. ...



Spacings between Busbars: The spacings between busbars are critical to prevent electrical shock and ensure safe operation. The NEC requires a minimum spacing of 12 inches (305 ...



The section outlines the required minimum distances between uninsulated metal components, busbars, and live parts, as specified in Table 408.56. It allows for closer placement of parts of the same ...



Designing safe distances between high-voltage busbars is essential for equipment performance and safety. It requires evaluating voltage levels, environmental factors, and manufacturing processes, ...



How do you calculate creepage distance for low voltage busbars? How does pollution degree affect busbar spacing? Can insulated busbars use smaller clearances than bare busbars? ...



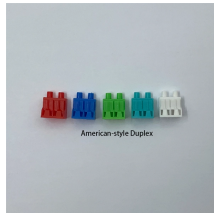
It defines the minimum distances between live parts and between live parts and earthed metal parts. These clearances help prevent arcing, short circuits, and accidental electric shock.



It defines the minimum distances between live parts and between live parts and earthed metal parts. These clearances help prevent arcing, short ...



The table, in addition to giving specifications regarding the maximum thickness of the busbar, the maximum current and the maximum nominal voltage, distinguishes between busbars ...



Our IEC 61439 busbars are high in demand due to their optimum performance in power distribution and electrical systems. Our engineers have years of experience in optimizing the ...



The closest distance I have between the bus bars and the panel itself is 0.6" with the panel doors closed. This dimension is the one that concerns me and has ultimately led me to posting ...



For main switchboards rated at above 1kV, a minimum clearance distance of 25 mm is required for busbars and other bare conductors.

Contact Us

For more information, pricing, or custom data center solutions, please contact us:

Website: <https://www.yoahorroenergia.es>

Email: hello@yoahorroenergia.es

Phone: +233 54 318 7269

Address: Plot 28, Spintex Road, Accra, Greater Accra, Ghana

This document is for informational purposes only. Specifications subject to change without notice.

