

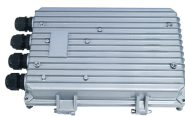
Malta Maintenance Wall-Mounted Patch Box 6-core



Malta Maintenance Wall-Mounted Patch Box 6-core



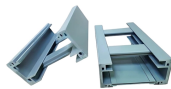
Construction Physical Specifications 6
Cassettes/Frames: 192 Fibers (LC); 96 Fibers (SC)



No more tangled cables in your network rack thanks to the PATCHBOX cabling system with retractable patch cables and fiber optic cables.



No more tangled cables in your network rack thanks to the PATCHBOX cabling system with retractable patch cables and fiber optic cables.



From fiber and cable routing and strain-relief to port labeling and termination, these housings reduce the risk of error that can disrupt networks. The WCH housing provides interconnect or cross-connect ...



€139,99 PATCH PANEL CAT6 48PORT 2U FUSION + C/ MGMT BAR €87,81 PATCH PANEL 48PORT CAT5E 2U FUSION + C/M/B FUSION €104,40 PATCH PANEL CAT6A FTP 24 PORT H/DENSITY ...



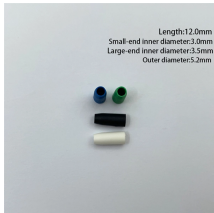
The metal fiber box is used for the end-user's termination in residential & commercial premises and villas. This wall mount fiber patch panel box comes with 1 cable access inlet and 4-outlet port, usually ...



Streamline your cabling with wall-mounted patch panels. Discover compact, space-saving options featuring sturdy metal construction and flexible installation.



Shop our 6 core wall mounted fiber optic patch panels for efficient FTTH solutions. Durable, high-capacity, and easy installation. Perfect for fiber networks.



Excel Enbeam LC Patch Box 6 Port Quad (24 Core) 160mm x 160mm x 80mm code: 202-109 Add to Cart



Multilink wall mount fiber distribution boxes include solutions for patch cable interconnection or a combination of splicing and patching. We separate these products into multiple groups based on ...



The series "ST" of wall mount boxes are made up of pressbent steel sheet and have hidden hinges. The box body has a triple angle along the edge of contact with the door, guaranteeng IP66 degree of ...

Contact Us

For more information, pricing, or custom data center solutions, please contact us:

Website: <https://www.yoahorroenergia.es>

Email: hello@yoahorroenergia.es

Phone: +233 54 318 7269

Address: Plot 28, Spintex Road, Accra, Greater Accra, Ghana

This document is for informational purposes only. Specifications subject to change without notice.

