

Mali LPO 40G Optical Module Franchise



Overview

Amphenol XPO-LPO optical transceiver delivers next-generation 12.8T Ethernet connectivity with 224 Gb/s per lane. Leveraging LPO technology, the module provides ultra-low-latency, power-efficient optical links tailored for AI, high-performance computing, and hyperscale data center. Linear Pluggable Optics (LPO) are a new optical transceiver technology. The focus is on 400G and 800G LPOs using 56GBd lanes. It. Executive Summary of the Lpo Optical Transceiver Module Market This report delivers an in-depth, strategic perspective on the rapidly evolving Lpo optical transceiver module landscape, emphasizing technological advancements, market dynamics, and competitive positioning. It synthesizes critical data.

Mali LPO 40G Optical Module Franchise



This report analyzes the impact of growing data traffic and the changing architecture of data centers on the market forecast for Ethernet optical transceivers with a focus on the high-speed modules used in ...



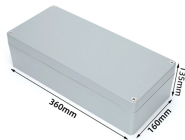
Customers have often singled out link accountability as a key impediment to adoption of LPO, and for good reasons



Some of the key proponents of LPO in the industry are Macom, Semtech and Maxlinear. The main advantages offered by LPO are reduced power consumption and lower system latency due to the ...



Our LPO transceivers support 400G and 800G applications in QSFP and OSFP form factors. They bring all the efficiency and performance benefits of LPO to data center operators, while integrating ...



Our optical modules feature traditional DPO, low-power LRO, LPO, and Active Loopback designs for testing, and support data rates from 10G up to 1.6T across a wide range of package types.



LPO (Linear Pluggable Optics) transceivers lack full retiming (DSP) circuitry that is common in all prior generations of 400G, 800G and 1.6T optical modules. As a result, LPO relies on the host to handle ...



By integrating comprehensive market sizing, growth forecasts, and competitive intelligence, this analysis offers a nuanced understanding of the key drivers shaping the Lpo optical ...



The focus of the LPO MSA is to specify module and network equipment level interoperability requirements that span both electrical and optical technologies. Starting at 100 Gb/s per lane, the ...



Amphenol XPO-LPO optical transceiver delivers next-generation 12.8T Ethernet connectivity with 224 Gb/s per lane. Leveraging LPO technology, the module provides ultra-low ...



On the right-hand side, a retimed optical module is illustrated consisting out of a DSP and an optical engine. The DSP inside the module has a SerDes facing the host ASIC.

Contact Us

For more information, pricing, or custom data center solutions, please contact us:

Website: <https://www.yoahorroenergia.es>

Email: hello@yoahorroenergia.es

Phone: +233 54 318 7269

Address: Plot 28, Spintex Road, Accra, Greater Accra, Ghana

This document is for informational purposes only. Specifications subject to change without notice.

