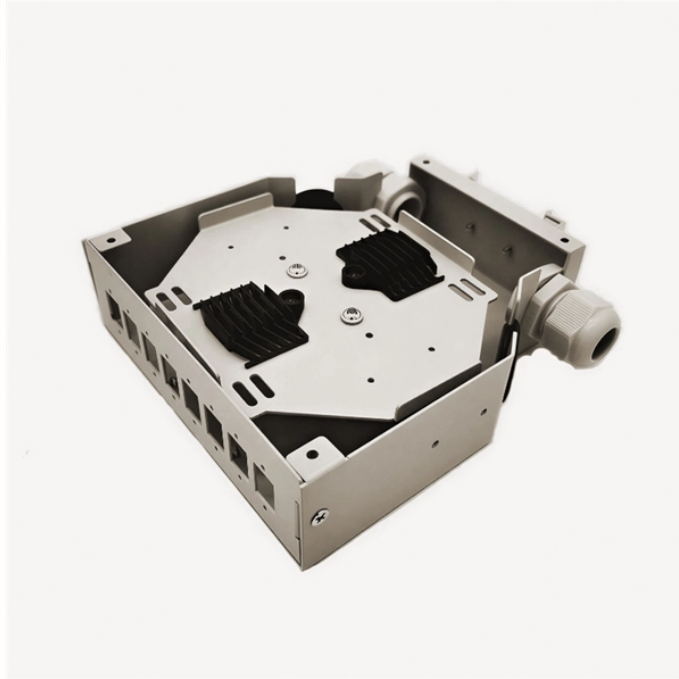


Making Cable Trays Smaller Part 6



Overview

31 (C) now aligns with the Code's broader language (like Article 392), allowing these smaller conductors and detailing how to calculate ampacities, the number of conductors permissible in cable trays, how to size cable trays correctly by width, layering or. The updated section 690. more In this video is explained practically How To Make Reducer Cable Tray | 100 mm Senter. Actually I made ladder cable tray family with 6 different width, 3 different rung spaces and 4 different heights using check boxes. Now when I am using in the project it is working good as expected but there is only one issue where I am stuck. [com/watch?](https://www.youtube.com/watch?v=eQt8b-BLhX8)

[v=eQt8b-BLhX8&feature=youtu.be](https://www.youtube.com/watch?v=eQt8b-BLhX8) hi ninjaman Thanks for the video link. That was most. Cable tray (or cable ladder) systems are a popular alternative to electrical conduit systems, as they have an outstanding record for dependable service, design flexibility and cost savings in commercial and industrial applications. Whether you are running heavy copper for a UPS Backup System or delicate fiber optics for a CCTV Security Network, the physical.

Making Cable Trays Smaller Part 6



By applying the following formula you can quickly find the size of cut out section that you need to cut out of the side of the cable tray, or gutter-type ...



Use this cable tray sizing calculator to check fill %, select tray size, and comply with IEC 61537 & NEC 392 with formulas, example and checklist.



Historically, the NEC has allowed cable trays, but has lacked specific guidelines for sizing conductors and using smaller conductors like PV wire and DG cable on rooftops. The 2023 update ...



This guide covers the cable tray types and their appropriate applications, the fill rules for each configuration, ampacity derating requirements, ...



Guide for making bends, tees, crosses, risers and reducers from straight sections of wire basket cable trays live at the project.



In this video is explained practically How To Make Reducer Cable Tray | 100 mm Senter Reducer | Cable Tray Reducer cable tray reducer,cable tray senter reducer,100 mm cable...



Our wind certification report provides you with list of acceptable B-Line series cable tray supports, fittings and covers based off of the environmental conditions, cable loading, and type of cable tray in your ...



By applying the following formula you can quickly find the size of cut out section that you need to cut out of the side of the cable tray, or gutter-type section to make that angle.



When placing your family and attach a Cable tray you will see that a reducer is placed automatically when connecting another size cable ladder to it as you can see below.



It provides rules for acceptable wiring methods that can be ...



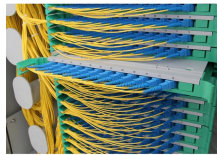
It provides rules for acceptable wiring methods that can be installed in cable trays, including conditions for use. It addresses uses permitted and not permitted for cable trays.



NEC Article 392 explains cable trays, their components, appropriate wiring methods for cable trays, and instances where they are and are not permitted for use. It also focuses on ...



Cable tray length is selected based on the load to be supported, the distance between the supports (also referred to as the span), and handling and installation constraints.



Ensure your cable runs meet NEC safety standards with our Cable Tray Fill Calculator. Calculate fill ratios for CAT6, Power, and Fiber cables to ...

Contact Us

For more information, pricing, or custom data center solutions, please contact us:

Website: <https://www.yoahorroenergia.es>

Email: hello@yoahorroenergia.es

Phone: +233 54 318 7269

Address: Plot 28, Spintex Road, Accra, Greater Accra, Ghana

This document is for informational purposes only. Specifications subject to change without notice.

