

## Main busbar of the distribution cabinet



### Overview

The busbar's material composition and cross-sectional size determine the maximum current it can safely carry. Busbars can have a cross-sectional area of as little as 10 square millimetres (0.016 sq in), but may use metal tubes 50 millimetres (2.0 in) in diameter or more as busbars. use very large busbars to carry tens of thousands of to the that.



## Main busbar of the distribution cabinet



The busbar's material composition and cross-sectional size determine the maximum current it can safely carry. Busbars can have a cross-sectional area of as little as 10 square millimetres (0.016 sq in), but electrical substations may use metal tubes 50 millimetres (2.0 in) in diameter or more as busbars. Aluminium smelters use very large busbars to carry tens of thousands of amperes to the electrochemical cells that produce aluminium



The busbar compartment is located in the middle section of the switchgear and contains the main busbars that distribute power to the various panels. Main busbars can be located at the top, center, ...



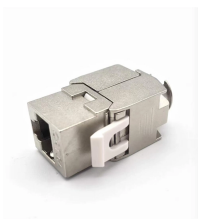
Except for rare main lug only applications, most control panels will have a main overcurrent protective device (OCPD) within the cabinet. This can be a circuit breaker or a fused disconnect.



Like blood vessels in the human body, it closely connects various electrical components in the distribution cabinet to achieve efficient transmission and distribution of electric energy. ...



Low Voltage Switchgear Design: How Better Busbar Systems and Smarter Current Ratings Improve Reliability In low-voltage power distribution, the cabinet is never just a cabinet, and ...



The main switchgear distribution bus has three busbar sets (one set per phase) which run horizontally through all the cubicles in a line-up. These distribution busbars run through a dedicated ...



Avoid certification failures and costly redesigns. This guide compares IEC, ANSI, and GB busbar standards with real project cases and compliance tools.



A distribution busbar is a metallic conductor system, typically made of copper or aluminum, that serves as the main power distribution pathway within electrical panels.



In electric power distribution, a busbar (also bus bar) is a metallic strip or bar, typically housed inside switchgear, panel boards, and busway enclosures for local high current power distribution, ...



Busbar System: The Core Power Distribution Path. The busbar system is the central component of any switchgear cabinet. It acts as the main electrical pathway that distributes power ...



Main busbar is removable for flexible installation. Fully shrouded Neutral busbar for increased safety. Choice of metering option to suit application needs and aid compliance with latest Building ...

## Contact Us

For more information, pricing, or custom data center solutions, please contact us:

Website: <https://www.yoahorroenergia.es>

Email: [hello@yoahorroenergia.es](mailto:hello@yoahorroenergia.es)

Phone: +233 54 318 7269

Address: Plot 28, Spintex Road, Accra, Greater Accra, Ghana

This document is for informational purposes only. Specifications subject to change without notice.

