

MAC Binding of Access Switch



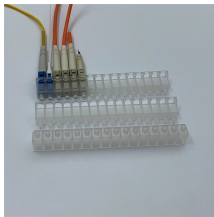
Overview

MAC-binding means binding the media access control (MAC) address to a device's Internet Protocol (IP) address. Oluwademilade is a tech enthusiast with over five years of writing experience. He joined the MUO team in 2022 and covers various topics, including consumer tech, iOS, Android, artificial intelligence, hardware, software, and cybersecurity. In addition to writing at MUO, his work has appeared on. In the controller software Release 5. 2 or later releases, the controller enforces strict IP address-to-MAC address binding in client packets. Complete the following steps to create a MAC ACL on a switch port. The Switches page is displayed. RE: EX4300 Port Security - MAC Limiting (Allowed MAC) & ELS I have spent the last 4 hours searching for this.

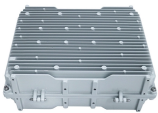
MAC Binding of Access Switch



MAC-binding means binding the media access control (MAC) address to a device's Internet Protocol (IP) address. Think about this as putting a nametag on every device that connects ...



If you want to bind IP and MAC addresses, you can only implement scheme 3. You can combine scheme 1 or scheme 2 with IP access control list according to your needs to achieve your ...



This article discusses how MAC-Based Access Control works and provides step-by-step configuration instructions for Cisco Identity Services Engine (ISE) and the Meraki dashboard.



To add the static configuration of an IP-to-MAC binding for a port to the database, enter the ip source-binding command at the global configuration level. Use the no form of the command to remove the IP ...



For Destination MAC, select Any or Destination MAC Address to enter a destination MAC address and destination mask. Click Add. You can see the new MAC ACL rule added in the Rules table. Select a ...



With MAC limiting, you limit the MAC addresses that can be learned on Layer 2 access interfaces by either limiting the number of MAC addresses or by specifying allowed MAC addresses.

DATA ADJUSTABLE, EASY TO USE



Port binding allows the network administrator to bind the MAC and IP addresses of a user to a specific port. After the port binding operation, the switch forwards a packet received from the port only if the ...



Implementing IP/MAC binding can significantly strengthen your network security, reduce IP conflicts, and enhance device control. Follow these steps and adjust as needed for your specific firewall model and ...



You must disable IP-MAC address binding to use an access point in sniffer mode if the access point is associated with a 5500 series controller, a 2500 series controller, or a controller network module. To ...



An ACL contains the hosts that are permitted or denied access to the network device. Media Access Control (MAC)-based Access Control List (ACL) is a list of source MAC addresses that use Layer 2 ...

Contact Us

For more information, pricing, or custom data center solutions, please contact us:

Website: <https://www.yoahorroenergia.es>

Email: hello@yoahorroenergia.es

Phone: +233 54 318 7269

Address: Plot 28, Spintex Road, Accra, Greater Accra, Ghana

This document is for informational purposes only. Specifications subject to change without notice.

