

Longest transmission distance of fiber optic patch cord



Overview

Single-mode fiber optic cables are more suitable for long-distance, high-speed transmission than multimode fiber optics. For most applications, the maximum distance of a single-mode cable is around 160 kilometers. However, the dispersion-compensating fibers can support more than. Executive Summary: AMPCOM's lab tested LC and SC connectors over 20km fiber optic cable links. Results show no measurable difference in insertion loss or return loss between connector types. Both LC and SC UPC connectors achieved insertion loss ≤ 0.15 dB and return loss ≥ 50 dB—well within single-mode. Patch Cables, also known as patch cords or fiber jumper cables, serve as the essential links that connect different network components such as switches, routers, and servers. Attenuation is the progressive loss of signal strength that occurs as light travels through the fiber.

Longest transmission distance of fiber optic patch cord



Explore the optimal cable length for data transmission, cable length limitations, and patch cable length selection. Follow industry standards and guidelines for reliable fiber optic networks.



In this guide, we'll explore how fiber optic cables function, the maximum distances for different types of fiber optics, and tips for optimizing signal transmission over long distances.



Learn how fiber optic transmission distance varies between single mode vs. multimode fiber. Discover key factors affecting fiber distance, bandwidth, and cost to choose the right fiber for ...



Multi-Mode Fiber (MMF): These cables have a larger core diameter and are suitable for shorter distances, such as within a data center or a building. Multi-mode fiber is often used in LANs and ...



In this comprehensive guide, we'll explore fiber optic transmission distances, the factors that determine maximum range, and how to optimize your installation for peak performance.



Transmission Distance Equally important is the transmission distance the cable is capable of supporting. Different types of fiber optic cables are optimized for varying distances. With single ...



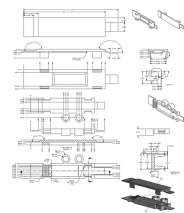
This is a 10m LC to LC Yellow OS2 Duplex OFNR (Riser-Rated) SMF Fiber Patch Cable with 1.6mm OD Jacket. OS2 fiber optic cable is a high-performance single-mode fiber designed for long-distance ...



AMPCOM's lab tested LC and SC connectors over 20km fiber optic cable links. Both LC and SC UPC connectors achieved insertion loss $\leq 0.15\text{dB}$ and return loss $\geq 50\text{dB}$ —well within single ...



The type, transmission rate, fiber material, and other factors affect the maximum transmission distance of fiber optic cable. This article also compares the maximum transmission ...



Learn how to choose the right fiber patch cord length for your network setup. Compare standard vs custom patch cable options with practical examples ...



Learn how to choose the right fiber patch cord length for your network setup. Compare standard vs custom patch cable options with practical examples including 2m LC LC fiber patch ...

Contact Us

For more information, pricing, or custom data center solutions, please contact us:

Website: <https://www.yoahorroenergia.es>

Email: hello@yoahorroenergia.es

Phone: +233 54 318 7269

Address: Plot 28, Spintex Road, Accra, Greater Accra, Ghana

This document is for informational purposes only. Specifications subject to change without notice.

