

Linux PHY optical receiver module



Overview

For optical modules used on switches, we read their information via brand-specific terminal commands. This document explains the Generic PHY Framework along with the APIs provided, and how-to-use. PHY is the abbreviation for physical layer., the USB controller has a PHY to provide functions such as serialization, de-serialization, encoding. ethtool is used to query and control network device driver and hardware settings, particularly for wired Ethernet devices. When the device name is the only argument to ethtool, it prints the current settings of the network device. Not all. In addition to independent devices such as switches and routers, optical modules can also work on network adapters (commonly known as network cards). 40 dBm
Module temperature : 39 degrees C / 103 degrees F
Module voltage : 3.

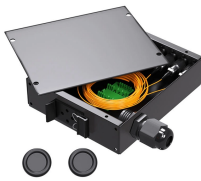
Linux PHY optical receiver module



For optical modules used on switches, we read their information via brand-specific terminal commands. This guide introduces how to read optical module information when it is installed ...



The intention of creating this framework is to bring the PHY drivers spread all over the Linux kernel to drivers/phy to increase code reuse and for better code maintainability.



Without the drivers, Linux is unable to use the hardware effectively, resulting in devices not being recognized or functioning properly. This document aims to provide comprehensive guidance for ...



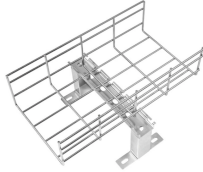
In the sample output below, you can see that this module is a 1000BASE-SX short-range optical module, manufactured by JDSU, part number PLRXPL-VI-S24-22.



/* Driver for the Texas Instruments DP83822, DP83825 and DP83826 PHYs. Linux kernel source tree. Contribute to torvalds/linux development by creating an account on GitHub.



Module voltage : 3.3010 V. Receiver signal average optical power : 0.1808 mW / -7.43 dBm. Identifier : 0x03 (SFP) Optical diagnostics support : Yes. Laser bias current : 28.660 mA. Laser output power : ...



To achieve this we used, and extended, a combination of Linux kernel internal frameworks such as Phylink or the SFP bus support; and of networking device drivers. In this blog post, we'll share some ...



ethtool is used to query and control network device driver and hardware settings, particularly for wired Ethernet devices. devname is the name of the network device on which ethtool should operate.



An Ethernet controller or Ethernet Media Access Controller is hardware responsible for interaction with the wired, optical or wireless transmission medium. Transmission medium is implemented by the ...



Most network devices consist of set of registers which provide an interface to a MAC layer, which communicates with the physical connection through a PHY.

Contact Us

For more information, pricing, or custom data center solutions, please contact us:

Website: <https://www.yoahorroenergia.es>

Email: hello@yoahorroenergia.es

Phone: +233 54 318 7269

Address: Plot 28, Spintex Road, Accra, Greater Accra, Ghana

This document is for informational purposes only. Specifications subject to change without notice.

