

# Linear drive for base stations with pluggable optical anti-tracking properties



## Overview

LPO transceivers cut power use, lower latency, and boost reliability in data centers, making them ideal for high-speed, energy-efficient optical links. Embodiments of present invention provide a linear-drive pluggable optics (LPO) transceiver. The LPO transceiver includes a receiver path, which includes a receiver optical subassembly (ROSA) converting an input optical signal into an ingress electrical signal; and a linear transimpedance amplifier. An LPO (Linear Pluggable Optics) solution offers considerable power savings for optical interconnect by removing the digital signal processing (DSP) function from the pluggable optical module. Designed to address next-generation short-reach, scale-up compute fabric connectivity requirements, LPO modules enabled by the chipset overcome the reach limitations of passive, DAC cable interconnects.

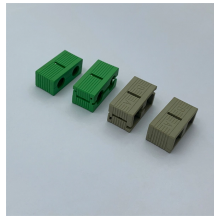
## Linear drive for base stations with pluggable optical anti-tracking p



LPO transceivers cut power use, lower latency, and boost reliability in data centers, making them ideal for high-speed, energy-efficient optical links.



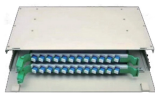
Embodiments of present invention provide a linear-drive pluggable optics (LPO) transceiver.



The LPO MSA develops electrical and optical interoperability specifications for a diversity of high-density networking equipment and pluggable optical modules based on LPO technology



Explore how Linear Pluggable Optics (LPO) transforms 800G transceivers in data centers, reducing power, latency, and costs while enabling high-speed, short-reach connectivity.



A: Linear Pluggable Optics refers to a solution that utilizes a low-power pluggable module that does not incorporate a DSP chip. The signal path from end to end in the link is considered linear, ...



“The Linear Drive architecture demands close handshaking between PMDs and switch ASIC to ensure the success of LPO. This demonstration proves such interoperability for both multi ...



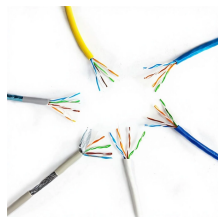
LPO differs from traditional optical modules by using linear drive and pluggable design, supporting hot-swappability to simplify fiber cabling and equipment maintenance.



Linear optical designs enable a new architecture for the networking industry to optimally address SMF and MMF interconnect needs at lower power consumption, latency, and total system cost.



A: Linear Pluggable Optics refers to a solution that utilizes a low-power pluggable module that does not incorporate a DSP chip. The signal path ...



Marvell announced the general availability of a 200G per lane optimized transimpedance amplifier (TIA) and laser driver chipset, enabling 800 Gbps and 1.6 Tbps linear-drive pluggable optics (LPO).

## Contact Us

For more information, pricing, or custom data center solutions, please contact us:

Website: <https://www.yoahorroenergia.es>

Email: [hello@yoahorroenergia.es](mailto:hello@yoahorroenergia.es)

Phone: +233 54 318 7269

Address: Plot 28, Spintex Road, Accra, Greater Accra, Ghana

This document is for informational purposes only. Specifications subject to change without notice.

