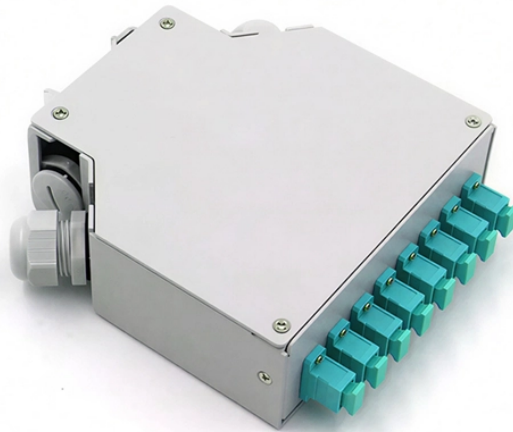


# Liechtenstein Custom-Made Erbium-Doped Fiber Amplifier 1 6T

---



## Liechtenstein Custom-Made Erbium-Doped Fiber Amplifier 1 6T



This paper is centered on four important parts of Erbium doped fiber amplifier (EDFA) optical amplifier; first is the atomic part, where it is evident and meaningful to give deep and details information of ...



We demonstrate the first EDWA-enabled Terabit-class coherent optical communication with 1.6-Tb/s net bit rate per channel and 16 -channel WDM transmission over 81 -km fiber, proving the potential of ...



EDFA (Erbium-Doped Fiber Amplifier) is an optical device used to compensate optical signal attenuation caused by fibers and components, to increase optical ...



F-EDF erbium doped fibers provide the basic building block to fiber optic amplifiers used in broadband optical networks in the 1550 nm transmission window. These erbium doped fibers deliver gain ...



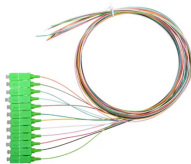
An alternative approach to broadband EDFAs uses a fluoride fiber in place of silica fiber as the host medium in which erbium ions are doped. Gain flatness over a 76-nm bandwidth has been realized by ...



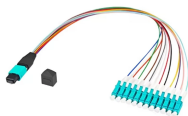
EDFA (Erbium-Doped Fiber Amplifier) is an optical device used to compensate optical signal attenuation caused by fibers and components, to increase optical transmission distance.



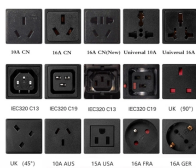
These benchtop fiber amplifiers join our femtosecond all-PM-fiber erbium-doped amplified oscillator, the FSL1550, which produces < 40 fs pulses and provides record peak pulse power.



Discover how the Erbium-Doped Fiber Amplifier (EDFA) uses quantum physics to defeat signal loss and power global fiber optic networks.



The combined beam passes through the erbium-doped fiber, where the signal is amplified through interaction with the excited erbium ions. The output is a strengthened replica of the ...



Erbium doped fiber amplifier (EDFA) is defined as a crucial component in advanced wavelength division multiplexing (WDM) systems that provides optical gain over a wide wavelength range, typically ...



1.1 Long Haul Fiber Networks 1.2 Historical Development of Erbium-Doped Fiber Amplifiers 1.3 From Glass to Systems Outline OPTICAL FIBER FABRICATION 2.1 Introduction •". 2.2 Conventional ...

## Contact Us

For more information, pricing, or custom data center solutions, please contact us:

Website: <https://www.yoahorroenergia.es>

Email: [hello@yoahorroenergia.es](mailto:hello@yoahorroenergia.es)

Phone: +233 54 318 7269

Address: Plot 28, Spintex Road, Accra, Greater Accra, Ghana

This document is for informational purposes only. Specifications subject to change without notice.

