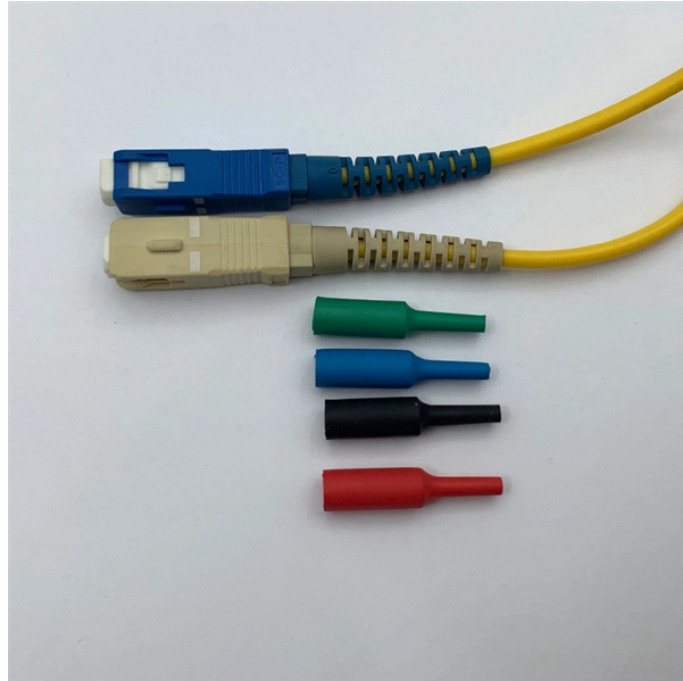


## Lc1860c interface



## Lc1860c interface



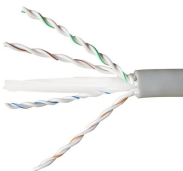
This is a LC1860C LEADCORE Specialized Hot ICs. Learn more about LC1860C, view manufacturer, inventory, and LC1860C datasheet pdf at YIC International Co., Limited.



You can get components availability and pricing for LC1860C, view ...



Learn about LEADCORE and view LC1860C pricing, PDF datasheets, inventory, and more information. AllelcoElec provides the best price and best service.



Description: TRANSIENT ABSORPTION ZENER. 24 Results. Datasheet: 586Kb/4P. Manufacturer: Microsemi Corporation.



[Click here to report and we will fix it.](#)



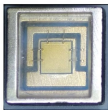
IC Components Ltd is Distributor of IC and Capacitors Electronic Components @ 2018 IC-Components All right Reserved.



Full processor specifications for Leadcore InnoPower LC1860C. Get to know the full details of this processor from DeviceBeast.



The LC1860C components of Jotrin Electronics are carefully chosen, undergo stringent quality control, and are successfully meet all required standards. The production status marked on Jotrin is for ...



Technical specifications and performance with the benchmarks of the Leadcore L1860C processor dedicated to the smartphone sector, it has 4 cores, 4 threads, a maximum frequency of 1.5GHz.



LC1860C This is a cached page collected on 4/4/2026 8:32:03 AM, to receive our suppliers" latest quotation, please click View Today"s Offer >>



You can get components availability and pricing for LC1860C, view detailed information that including LC1860C manufacturer, datasheets PDF, pinout, pin voltage, circuit diagram, schematic diagram, ...

## Contact Us

For more information, pricing, or custom data center solutions, please contact us:

Website: <https://www.yoahorroenergia.es>

Email: [hello@yoahorroenergia.es](mailto:hello@yoahorroenergia.es)

Phone: +233 54 318 7269

Address: Plot 28, Spintex Road, Accra, Greater Accra, Ghana

This document is for informational purposes only. Specifications subject to change without notice.

