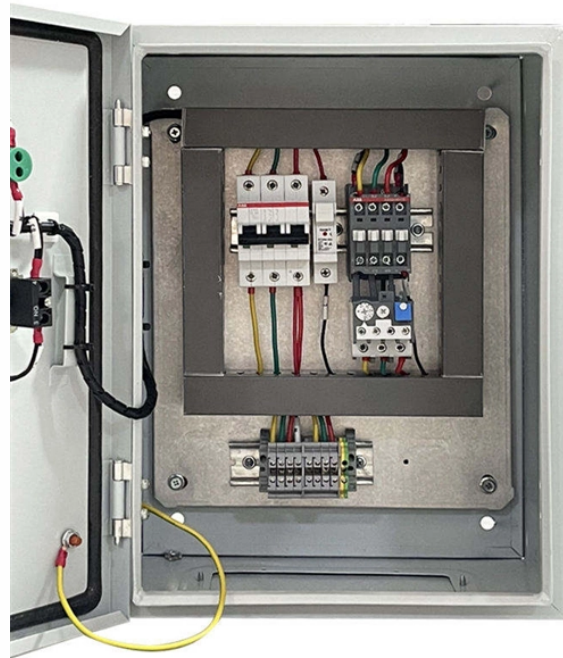


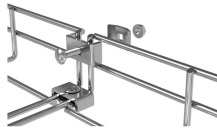
Large-core fiber collimator



Large-core fiber collimator



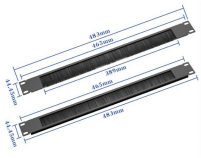
The fiber collimators series 60FC-L are designed for collimating radiation exiting optical fiber cables with high pointing stability and large beam diameters. They can also be used in reverse-mode as fiber ...



Agiltron's 1kW (CW) Fiber Collimators incorporates advanced technologies of direct fusion to a large beam expanding end cap ensuring safe power density, and a mode stripper that prevents burning ...



We manufacture High Performance Fiber Collimators that are designed to give ...



Thorlabs' Achromatic Fiber Collimators with adjustable focus are designed with an effective focal length (EFL) to the fiber of 20 mm, 40 mm, or 80 mm. Each collimation package is available with an AR ...



To couple light both into and out of an optical fiber, it is essential to have a collimated light beam. With the help of an optical collimator, the divergence of the light beam can be significantly reduced.



While standard fiber collimators are suitable for low-power telecom signals, high-power applications (e.g., fiber lasers or material processing) require specialized designs.



Thorlabs also offers a range of fixed and adjustable collimation packages for collimating a laser beam from the end of an FC/PC, FC/APC, or SMA connectorized fiber while maintaining diffraction-limited ...



We manufacture High Performance Fiber Collimators that are designed to give highly collimated beams with high transmission and low transmitted wavefront error. Our unique multi element design ensures ...



Discover large beam fiber collimators at Sherlan Optics. Get reliable performance, high precision, and quality optics designed for advanced applications.



Our high-performance pure Gaussian beam fiber collimators are designed and manufactured with special applications in mind ranging from Lidar, Interferometry, Remote Sensing, to Spectroscopy, ...



CLE and CLF series extra-large beam collimators are based on achromatic doublet lenses for the unusually large sizes. They feature 8 and 16 mm beam sizes for single mode fiber and are suitable ...

Contact Us

For more information, pricing, or custom data center solutions, please contact us:

Website: <https://www.yoahorroenergia.es>

Email: hello@yoahorroenergia.es

Phone: +233 54 318 7269

Address: Plot 28, Spintex Road, Accra, Greater Accra, Ghana

This document is for informational purposes only. Specifications subject to change without notice.

