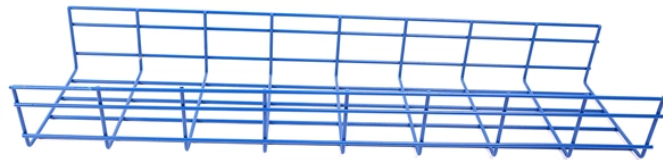


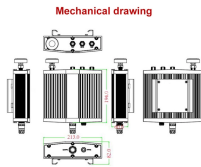
# **Kazakhstan ODF patch panel single core**



## Kazakhstan ODF patch panel single core



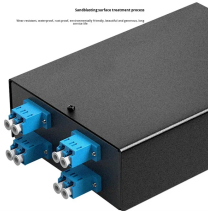
An ODF patch panel is a fiber management device used to organize and simplify optical connections in data centers and telecom rooms, improving signal integrity, maintenance efficiency, and scalability.



ODF unit box includes a fiber optic cable entry hole at the rear and a fixing module for securing incoming fiber optic cable from the back side. The fiber splice trays ...



The units are available in two panel sizes both with maximum number and without adapters mounted. It is front serviced and consists of two panels possible to swing out for easy installation and maintenance.



Achieve successful cable management, handle high amounts of fiber cable and add density to fiber frames with the new DCX Optical Distribution Frame (ODF) System which features innovations like ...



Made from high-quality steel and electrostatic spray finished, this patch panel is ideal for optical telecommunication systems, FTTH, WAN, TV networks and cable terminal branch connections.



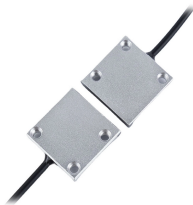
Streamline your fiber connectivity with our premium Fiber Optic Patch Panels and ODF systems. Designed for reliability and ease of use, our rack-mount and wall-mount solutions provide the perfect ...



This supplier is a manufacturer and trader, primarily exporting to Hong Kong, Kazakhstan, and the US. They offer quality control and design-based customization services.



We specialist on IT solutions as well as facility data center and ELV System, to fulfill the market need standard, professional, and reliable partner.



Our patch panel offers high-density fiber connectivity in a compact 4RU enclosure, perfect for space-constrained environments. Seamlessly integrate with our FlexCore™ ODF 600mm frames.



ODF unit box includes a fiber optic cable entry hole at the rear and a fixing module for securing incoming fiber optic cable from the back side. The fiber splice trays are designed with upper and lower layers, ...



Explore optical distribution frames (ODF) with efficient distributed chassis solutions at CommScope

## Contact Us

For more information, pricing, or custom data center solutions, please contact us:

Website: <https://www.yoahorroenergia.es>

Email: [hello@yoahorroenergia.es](mailto:hello@yoahorroenergia.es)

Phone: +233 54 318 7269

Address: Plot 28, Spintex Road, Accra, Greater Accra, Ghana

This document is for informational purposes only. Specifications subject to change without notice.

