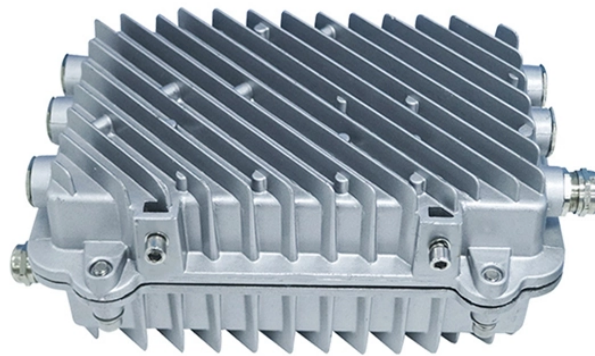


Is the transformer a primary distribution box



Overview

Electric power distribution is the final stage in the. Electricity is carried from the to individual consumers. Distribution connect to the transmission system and lower the transmission voltage to medium voltage ranging between 2 and 33 kV with the use of. Primary distribution lines carry this medium voltage power to located.



Is the transformer a primary distribution box



From the transformer's low-voltage side (0.4kV), power is distributed to a main distribution panel (primary distribution box).



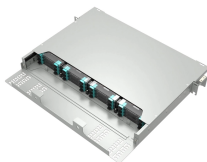
This article discusses primary distribution system transport of medium-voltage power from substations via feeders to local transformers to ensure reliable and efficient electricity delivery.



Typical equipment for this system arrangement is a single unit substation consisting of a fused primary switch, a transformer of sufficient size to supply the loads, and a low-voltage switchboard.



Primary distribution lines are “medium-voltage” circuits, normally thought of as 600 V to 35 kV. Close to end users, a distribution transformer takes the primary distribution voltage and steps it down to a low ...



This explanation aims to clarify the roles and functions of primary, secondary, and tertiary distribution boxes, enhancing the understanding of these critical components in electrical distribution ...



Closer to the customer, a distribution transformer steps the primary distribution power down to a low-voltage secondary circuit, usually 120/240 V in the US for residential customers.



OverviewHistoryGeneration and transmissionPrimary distributionSecondary distributionModern distribution systemsSee alsoExternal links



Primary distribution systems consist of feeders that deliver power from distribution substations to distribution transformers. A feeder usually begins with a feeder breaker at the ...



Primary distribution box: three-phase power supply, ground wire and zero wire are introduced from the transformer. Secondary distribution box: from the power line of primary distribution box to temporary ...



Substations serve as critical nodes connecting generation, transmission, and distribution networks. While substations are used for several distinct system functions, most utilize electric power ...



Utilities may have some control over and access to the energy stored in electric vehicles attached to the grid.

Contact Us

For more information, pricing, or custom data center solutions, please contact us:

Website: <https://www.yoahorroenergia.es>

Email: hello@yoahorroenergia.es

Phone: +233 54 318 7269

Address: Plot 28, Spintex Road, Accra, Greater Accra, Ghana

This document is for informational purposes only. Specifications subject to change without notice.

