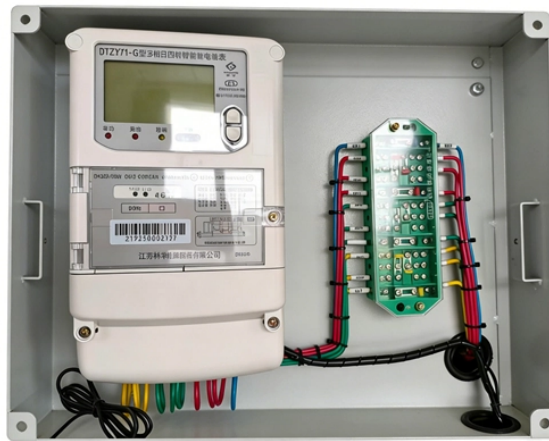


Is the distribution box considered a major expense



Overview

All distribution costs are considered indirect expenses and come under the head of selling and distribution expenses in the company's profit and loss statement. Related articles the Cost of Goods Sold Present in the Statement of Cash Flow?

As indicated in Figure FSP 3-1, S-X 5-03 requires registrants to separately identify certain operating expense line items if they are material. In practice, many reporting entities will separately identify selling, general, and administrative costs (SG&A) as a single line item, but other operating. Distribution costs are every expense a business incurs moving a finished product from the end of the production line to the customer's door. For consumer packaged goods companies, these costs typically run 6% to 8% of total revenue, though the figure varies widely by industry. Effective expense categorization allows businesses to see exactly where money is being spent, which is essential for budgeting and financial planning. It forms the basis for. And finally, here is a list of the most common cost and expense accounts with descriptions. Fertilizers and Lime: Fertilizers and lime purchased for farm

operations. Freight and Trucking: Amounts paid for freight or trucking of farm products. Distribution costs are also known as distribution expenses and they are records in the. The appropriate expense category for storage costs depends heavily on the purpose of the storage: Costs associated with storing goods held for sale (inventory) are often considered part of the Cost of Goods Sold (COGS).

Is the distribution box considered a major expense



Printing and stationery expense is an administrative expense for the vast majority of organizations. An exception to this would be a retailer of stationery supplies or a printing press, in which case you will ...



Distribution costs show up on the income statement as operating expenses. Many companies report them within the Selling, General, and Administrative line, which places them below ...



This assessment will depend on materiality, and what is deemed to be most useful to a reporting entity's financial statement users. The SG& A line item frequently includes the sum of all direct and indirect ...



Freight and Trucking: Amounts paid for freight or trucking of farm products. Seeds and Plants Purchased: Seeds and plants purchased for producing farm income. Storage and ...



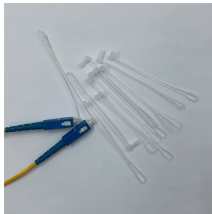
If you're wondering what expense category storage comes under, you're not alone. Many people are unsure where to categorize storage expenses. However, storage generally falls under the category of ...



Technically, expenses are "decreases in economic benefits during the accounting period in the form of decreases in assets or increases in liabilities that result in decreases in equity, other than those ...



Effective expense categorization allows businesses to see exactly where money is being spent, which is essential for budgeting and financial planning. It forms the basis for insightful financial ...



Distribution and warehouse expenses encompass all costs associated with storing, handling, and moving goods from the point of origin to the end consumer. These costs are a ...



Fees paid for online data storage (e.g., Google Drive, Dropbox, AWS S3, Microsoft Azure) are usually classified under IT Expenses, Software Subscriptions, or sometimes Dues and ...



All distribution costs are considered indirect expenses and come under the head of selling and distribution expenses in the company's profit and loss statement.

Contact Us

For more information, pricing, or custom data center solutions, please contact us:

Website: <https://www.yoahorroenergia.es>

Email: hello@yoahorroenergia.es

Phone: +233 54 318 7269

Address: Plot 28, Spintex Road, Accra, Greater Accra, Ghana

This document is for informational purposes only. Specifications subject to change without notice.

