

Is replacing a network server rack risky



Overview

Moving fully populated server racks poses serious safety and hardware risks. The racks have a high center of gravity, making them unstable, and their mounting kits are not designed to absorb shock or vibration. These two rack types serve distinct roles inside data centers and server rooms, and understanding their technical differences helps align your hardware strategy with. Replacing 670 network switches in a data center is kind of like that, times 1,000. And that's exactly what we did in our Sacramento data center recently. Each option has its pros and cons based on your organization's needs. upgrade—What's. At some point, the question becomes practical rather than technical: do you actually need a server rack at home?

The answer is not automatically yes. But it is also not limited to enterprise IT environments. Ready to elevate your mission-critical operations?

From medical equipment to military systems, our. Network installation risks can be both “hard”—things that pose safety to life and limb as well as installation materials and network components—and “soft”—inadequate or

inaccurate planning, topology, or system design that adversely affects its functionality.

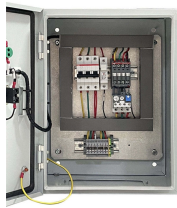
Is replacing a network server rack risky



Learn how to identify and mitigate network installation risks and hazards with risk assessment, training, and planning ahead.



Selecting the right server rack requires considering factors like the number of servers, energy efficiency, and future deployment needs. Customized racks meet specific requirements, while ...



Compare server racks and network racks side by side. See the size, depth and mounting differences that determine which rack suits your data centre or server room.



With the lower server count per rack, it would be costly to deploy ToR switching, so we use more of a hybrid model to support our latest generation hardware. I can definitely attest to the ...



Replacing servers can feel like hitting the reset button with better technology. You get improved performance and more reliability, but it can come with higher costs and the chance of ...



Moving fully populated server racks poses serious safety and hardware risks. The racks have a high center of gravity, making them unstable, and their mounting kits are not designed to absorb shock or ...



At some point, the question becomes practical rather than technical: do you actually need a server rack at home? The answer is not automatically yes. But it is also not limited to enterprise IT ...



Legacy rack servers pose several critical risks including system failures that can halt production lines, slow processing speeds that can't handle real-time IoT data feeds, and escalating maintenance costs ...



If you only have one rack-mountable server and don't foresee expanding your setup significantly, a full rack might be overkill. However, if you anticipate growing your server infrastructure ...



When they slow down, age out, or fail unexpectedly, productivity, data security, and customer trust are all at risk. But the real question is — how do you know when it's time to replace a server instead of ...

Contact Us

For more information, pricing, or custom data center solutions, please contact us:

Website: <https://www.yoahorroenergia.es>

Email: hello@yoahorroenergia.es

Phone: +233 54 318 7269

Address: Plot 28, Spintex Road, Accra, Greater Accra, Ghana

This document is for informational purposes only. Specifications subject to change without notice.

