

# Introduction to Cable Tray Production Capacity



## Overview

Cable tray load capacity depends on several key factors including tray width, depth, material thickness, support spacing, and the specific tray type such as ladder, perforated, or solid bottom. The initial processing involves cutting raw steel sheets to precise dimensions using advanced laser cutting or punching equipment. A typical cable tray production line encompasses several key stages. It begins with raw material input, usually galvanized steel or stainless steel coils. These coils are then uncoiled and flattened through a leveling machine. These trays help keep wiring organized, protected, and accessible for. Cable Trays Market, By Material (Steel, Aluminum, Fiberglass, Copper, and Others), By Type (Ladder Type, Perforated Type, Solid Bottom Type, Channel Type, and Others), By Application (Commercial Buildings (largest share), Industrial, Infrastructure, Residential, and Others), By Geography (North. Cable tray systems are widely used in industrial facilities, commercial buildings, data centers, power plants, and infrastructure projects. Cable trays provide an organized and accessible alternative to conduit systems, allowing for easier installation, maintenance, and future expansion of cable. The global cable tray market is forecast to grow at a CAGR of 5.57% during the period

2019-2024. This press release features multimedia.

## Introduction to Cable Tray Production Capacity



Production Capacity Enhancements: The overall industry shows a ...



The foundation of quality cable tray production begins with meticulous steel processing and preparation procedures. Every reputable cable tray manufacturer starts with high-grade steel materials that meet ...



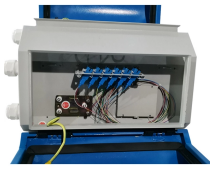
Learn about the production stages, advantages, and key considerations for high efficiency and quality.



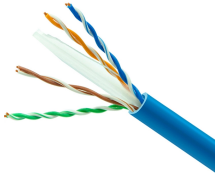
Discover the detailed process on how to produce cable trays, covering everything from material selection to assembly and surface treatment. Learn key techniques for efficient cable tray ...



Cable trays are classified into several types, such as ladder-type, perforated type, trough type, solid bottom type, and ventilated type. The rising demand for efficient power distribution in ...



Production Capacity Enhancements: The overall industry shows a notable increase in production capacity across emerging economies, particularly in East Asia and Southeast Asia, where ...



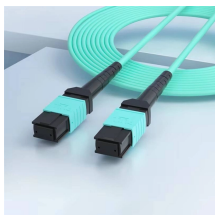
In designing supports for a cable tray system, consideration should be given to the loads associated with future cable additions and any additional loading that may be applied to the cable tray system (e.g., ...



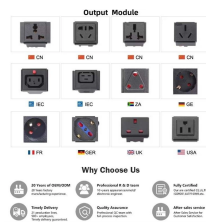
A robust and reliable cable tray production line is crucial for meeting this demand. This article will delve into the intricacies of these production lines, examining the key components, ...



Discover how cable tray production lines power global infrastructure with durable, scalable, and sustainable manufacturing solutions. Learn key specs, applications, and future trends.



Explore the global cable tray manufacturing industry including systems, market demand, regions, and roll forming machines used worldwide.



Metal Cable Tray Plant Capacity: The proposed manufacturing facility is designed with an annual production capacity ranging between 10,000 - 20,000 MT, enabling economies of scale while ...

## Contact Us

For more information, pricing, or custom data center solutions, please contact us:

Website: <https://www.yoahorroenergia.es>

Email: [hello@yoahorroenergia.es](mailto:hello@yoahorroenergia.es)

Phone: +233 54 318 7269

Address: Plot 28, Spintex Road, Accra, Greater Accra, Ghana

This document is for informational purposes only. Specifications subject to change without notice.

