


# Instrument markings on the primary distribution box

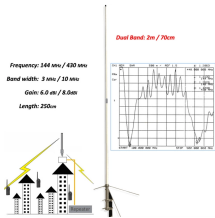



## Overview

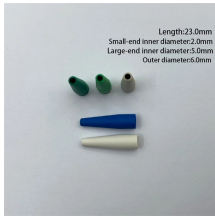
Check for UL or CE marks and make sure everything follows local codes. Look for damage and test with a multimeter if you know how. Modular boxes make upgrades easier. If you're unsure, ask an. It is normal to feel unsure about your distribution box. The labels might look confusing at first. This also helps keep your family safe. Look at this table to see how good. This standard describes requirements for numbering and labeling of real property electrical distribution equipment, circuits, and site lighting at Lawrence Livermore National Laboratory. This is an internal LLNL standard meant to guide the design of new facilities, facility modifications, and. (1) Except as provided in paragraphs (b) and (e) of this section, each label required by this subpart must - (i) Be printed on or affixed to a surface (other than the bottom) of the package or containment device containing the hazardous material; (ii) Be located on the same surface of the package. Distribution substation is a substation from which electric supply is distributed to the different users. The language used to describe and document complex measurement and control systems must be. The distribution box (DB box) helps safely and efficiently distribute electrical power.


## Instrument markings on the primary distribution box

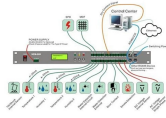
	<p>instrument (third-person singular simple present instruments, present participle instrumenting, simple past and past participle instrumented) (transitive) To apply measuring devices.</p>
---	---

	<p>Understand your distribution box labels to identify circuits, improve safety, and troubleshoot electrical issues in your home with confidence.</p>
---	---

	<p>The primary role of the power distribution box is to provide a safe and organized way to manage electrical circuits. It acts as a protective enclosure that houses several key components, ...</p>
--	---

	<p>Musical instrument, any device for producing musical sound. The principal types of such instruments, classified by the method of producing sound, are percussion, stringed, keyboard, wind, ...</p>
---	--

	<p>Distribution bucket positions are assigned numbers from top to bottom based upon the smallest available bucket size. This method results in a number/letter grid position for each possible bucket ...</p>
---	---



1. a mechanical implement or tool, esp one used for precision work: surgical instrument. 2. (Instruments) music any of various contrivances or mechanisms that can be played to produce musical tones or ...



**COMPLIANCE GUIDELINES FOR MARKING AND LABELING SYSTEMS** Most electrical products and equipment are required to be marked with specific safety-related information and meet permanency ...



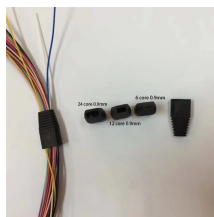
When primary and subsidiary hazard labels are required, they must be displayed next to each other. Placement conforms to this requirement if labels are within 150 mm (6 inches) of one another.



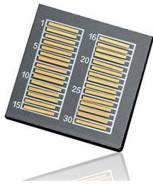
Popular in blues, folk, and country music, the harmonica is a small yet powerful instrument. Easy to carry and learn, harmonicas produce music through air blown into reed chambers.



implement, tool, instrument, appliance, utensil mean a relatively simple device for performing work. implement may apply to anything necessary to perform a task.



Electrical Equipment Did You Know? Proper labelling at all distribution points, circuit breakers, fuses and switches is required during installation, as well as whenever .



I want to receive updates from Yamaha Corporation of America on the latest products, services and marketing promotions. \*



It creates a logical grouping of instruments based on the primary process equipment they serve, which can be highly intuitive when viewing a P&ID. For instance, an ...



Learn the key PFD symbols used in process flow diagrams. Understand how to read and use standard symbols for equipment, lines, instruments, and more.



The metrics utilized for monitoring and diagnosing switching include the position of primary contacts, contact travel characteristics, operating time, pole discrepancies in operating times, ...



It creates a logical grouping of instruments based on the primary process equipment they serve, which can be highly intuitive when viewing a P&ID. For instance, an engineer can quickly identify all ...



The metrics utilized for monitoring and diagnosing switching include the position of primary contacts, contact travel characteristics, operating time, ...



a means by which something is done: an instrument of government. a device for measuring the value of something watched, esp. one used in navigation of aircraft: Suddenly the instruments went dead.



If you want to learn to play a musical instrument, it might be a good idea to begin on something simple. This wooden instrument is the ancestor of the modern metal flute.



Laser harp Mellotron MIDI controller Eigenharp MIDI keyboard Seaboard Moog synthesizer Omnichord Ondes Martenot Otamatone Personal computer (when used in conjunction with a software ...



Follow these steps to ensure your panels are accurately and safely labeled: 1. Identifying Circuits: Start by turning off the power to the panel and methodically testing each circuit. Identify the function of ...



Guitar - A string instrument with a wooden body, played by strumming or plucking Piano - A large keyboard instrument used in classical and pop music Violin - A small string instrument ...

## Contact Us

For more information, pricing, or custom data center solutions, please contact us:

Website: <https://www.yoahorroenergia.es>

Email: [hello@yoahorroenergia.es](mailto:hello@yoahorroenergia.es)

Phone: +233 54 318 7269

Address: Plot 28, Spintex Road, Accra, Greater Accra, Ghana

This document is for informational purposes only. Specifications subject to change without notice.

