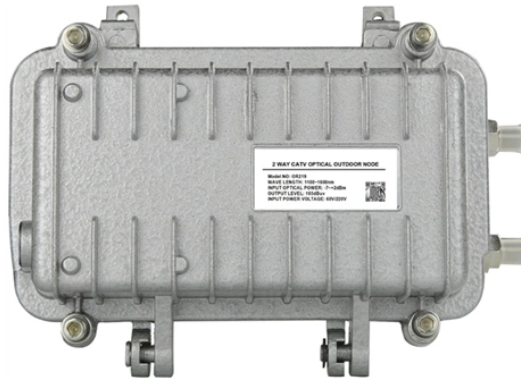


Installation of protective cage for secondary distribution box



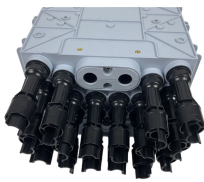
Overview

This document provides specifications, ordering information, illustrations, and application instructions for the various sizes of non-concrete and precast concrete enclosures used in PG&E electric underground secondary distribution. The Above-Ground Equipment Initiative is the result of an Advice Letter filed with the California Public Utilities Commission (CPUC) by SCE that was approved by Resolution E-4329 on April 22, 2010. Effective August 2, 2010, new equipment on private property is now required to be installed above. Since 1995, we have been making high quality security enclosures to protect small and large backflow assemblies. Our original, signature rounded design, provides superior strength and safety without any sharp corners. Whether in a home or an industrial facility, this box keeps your electrical setup organized, functional, and efficient.

Installation of protective cage for secondary distribution box



Choose your size, style, and finish to blend protection with appearance. We design enclosures around your exact measurements — ensuring maximum protection without compromising ...



In this guide, we'll break down everything you need to know to install a distribution box correctly and confidently. Choose the right box based on environment (indoor/outdoor), load ...



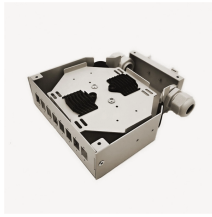
Electrical safety requirements, including the types of energized work permitted, approval process for energized work, and Personal Protective Equipment (PPE), applicable to the design, installation, and ...



We offer products to further protect your backflows assemblies from cold weather and to make your cage installations easier. We know sometimes there is no such thing as a standard install with so many ...



Important aspects which need to be considered to ensure the effective performance of the secondary system in a power substation.



Entities seeking to install communications facilities onto SCE poles shall comply with SCE standards and General Order 95 (G.O. 95) requirements. To access this manual, click on the manual title below.



All MTE infrastructure including but not limited to conduits, manholes, box pads, and pull boxes must have a minimum horizontal separation of 36" from gas and water lines.



Meridian's standard secondary containment system is designed with support posts located around the perimeter of the system. The number of support posts required is determined by the space between ...



Switch box shall be distributed by the final sub-distribution box. 2. The power distribution box and switch box must be rainproof and dustproof. 3. When the construction site stops working for ...



This document provides specifications, ordering information, illustrations, and application instructions for the various sizes of non-concrete and precast concrete enclosures used in PG&E electric ...

Contact Us

For more information, pricing, or custom data center solutions, please contact us:

Website: <https://www.yoahorroenergia.es>

Email: hello@yoahorroenergia.es

Phone: +233 54 318 7269

Address: Plot 28, Spintex Road, Accra, Greater Accra, Ghana

This document is for informational purposes only. Specifications subject to change without notice.

