

Installation of grounding wire for fiber optic cable junction box



Overview

This Applications Engineering Note (AE Note) discusses conventional bonding and grounding practices for conductive fiber optic cable and hardware installations within the scope of the National Electrical Code (NEC). Successfully installing an Optical Fiber Composite Overhead Ground Wire (OPGW) joint box is crucial for ensuring efficient telecommunications and electrical connections in overhead installations. 151 refers to the installation of optical fibre ground wire cable. It deals with the factors that should be considered in determining the characteristics of this type of cable, the apparatus that should be used, the precautions that should be taken in handling the reels, and. Since an optical fiber cable is non-conductive and there is no electric flowing, there are several advantages over a twisted copper cable in deploying: The non-conductive (dielectric) characteristics of fiber impacts how a designer lays out cabling pathways. When designing with fiber, you can. one thread adapter when an adaptor is used. A blankin ssemble cable through Ex-Proof Cable Gland. It is composed of AS wire, AA wire and stainless steel tube optical unit.

Installation of grounding wire for fiber optic cable junction box



Local cable company is installing fiber optic cable to residences. They are asking for a grounding conductor to be supplied at the point of termination on the outside of the residence.



Successfully installing an Optical Fiber Composite Overhead Ground Wire (OPGW) joint box is crucial for ensuring efficient telecommunications and electrical connections in overhead installations.



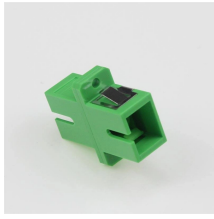
In installations where an optical fiber cable is exposed to contact with electric light or power conductors and the cable enters the building, the non-current-carrying metallic members shall ...



This Reference Manual spotlights the OPGW installation instructions required in the field. ZION offers detailed installation instructions on the proper techniques for installing OPGW cables.



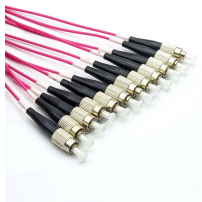
In practical implementations, conductive fiber optic cable will be bonded to the TMGB or the TGB (i.e. Central Office Ground Busbar, or COG Busbar) with a dedicated bonding conductor.



By following this guide, telecom engineers and product managers can ensure a secure, reliable installation that supports seamless connectivity and enhances overall network performance.



It deals with the factors that should be considered in determining the characteristics of this type of cable, the apparatus that should be used, the precautions that should be taken in handling the reels, and ...



Suitable tension should be maintained to keep OPGW hanging in the air to avoid abrasion of the OPGW cable on the ground. Meanwhile, it can reduce green shoots compensation, mitigate physical labor ...



Use only shielded cable. Temperatures at the cable entry can reach 80° C. Selection of cable must be appropriate for the ambient temperature range in which the product is used.



Learn how to professionally install a fiber optic junction box - a simple step-by-step guide.

Contact Us

For more information, pricing, or custom data center solutions, please contact us:

Website: <https://www.yoahorroenergia.es>

Email: hello@yoahorroenergia.es

Phone: +233 54 318 7269

Address: Plot 28, Spintex Road, Accra, Greater Accra, Ghana

This document is for informational purposes only. Specifications subject to change without notice.

