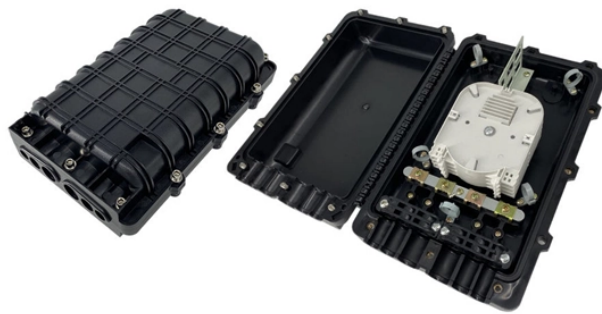


# **Installation of QSFP-DD industrial switches in Sweden**



## Installation of QSFP-DD industrial switches in Sweden



TE's QSFP-DD 2x1 cages and connectors add to the wide range of existing QSFP-DD surface mount products, providing customers with additional design options ...



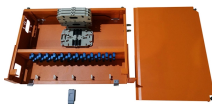
Find which switches support QSFP-DD modules. Our 2025 guide covers Cisco, Arista, Juniper and NVIDIA platforms with backward compatibility tips.



Installing and removing a pull latch transceiver module This installation procedure is applicable to QSFP-DD, QSFP28, CXP, and QSFP+ transceiver modules. The pull latch of transceiver modules can be ...



TE's thermal engineering team will work directly with you to design and optimize custom QSFP-DD port configurations. We make it easy to connect with our experts and are ready to provide all the support ...



The QSFP-DD family supports legacy QSFP channels on the front interface and four additional channels on the rear interface. This interconnect system optimizes density and power ...



Use the information in this topic to install OSFP or QSFP-DD optical transceivers and fiber-optic cables. Juniper Networks transceivers are hot-removable and hot-insertable field-replaceable units (FRUs).



The cage and connector design provides backwards compatibility to QSFP28 modules which can be inserted into a QSFP DD port and connected to 4 of the 8 electrical channels. It is one of the ...



The procedure for installing the QSFP-DD transceiver is shown below: Step 2: Insert the QSFP-DD transceiver to the guide rail inside the QSFP-DD port. Do not put the QSFP-DD transceiver up-side ...



The following figure shows the QSFP-DD transceiver, but the procedures outlined in this document apply to all pluggable transceivers. The QSFP-DD transceiver is used primarily in switches, routers, and ...



QSFP-DD is a new module and cage/connector system similar to current QSFP, but with an additional row of contacts providing for an eight lane electrical interface. It ...



This guide describes general handling measures and precautions when handling OSFP/QSFP-DD transceiver module to ensure that the risk of damage is reduced during processing



The 9300 32D and 9300S Switch Series will shutdown a port that may be exceeding the maximum temperature for a transceiver - this is to prevent damage to the transceiver and other components on ...



The guide provides complete information required for successful QSFP-DD transceiver installation through its technical specifications and module selection and cable compatibility and ...

## Contact Us

For more information, pricing, or custom data center solutions, please contact us:

Website: <https://www.yoahorroenergia.es>

Email: [hello@yoahorroenergia.es](mailto:hello@yoahorroenergia.es)

Phone: +233 54 318 7269

Address: Plot 28, Spintex Road, Accra, Greater Accra, Ghana

This document is for informational purposes only. Specifications subject to change without notice.

