

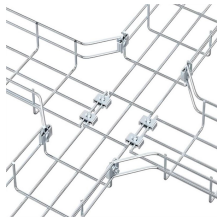
Installation of Micro-module Environmental System



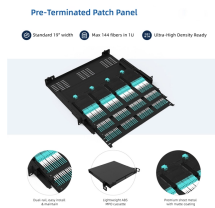
Installation of Micro-module Environmental System



To reduce the risk of electrical shock and ensure a safe installation and operation of the APsystems Microinverter, the following symbols appear throughout this document to indicate ...



The E-MINI-LXO (ENVIROMUX) are Server Environment Monitoring Systems designed to monitor, from a remote location, the critical environmental conditions in cabinets and rooms containing servers, ...



This manual contains important instructions for the correct installation and maintenance of the Photovoltaic Grid-connected Inverter (Microinverter).



Build a wireless temperature and humidity monitoring node with an Arduino Nano ESP32, Adafruit SHT45, and the MobileCollect Mini Mobile Module EVO. Data streams into Excel or any SPC ...



Guidelines outline criteria for PV module selection, inverter sizing, battery storage configuration, and system protection mechanisms. Adherence to design standards mitigates technical risks and ...



The “Module Embedded Micro-inverter Smart Grid Ready Residential Solar Electric System” program will develop and demonstrate a systems approach that will result in a cost take-out for the ACPV ...



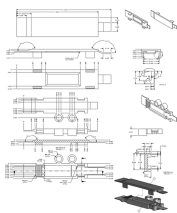
This handbook provides objective, approach and methods to deliver effective skill training to technicians for installation, operation & maintenance of solar PV microgrid systems.



To reduce the risk of electrical shock and ensure a safe installation and operation of the APsystems Microinverter, the following symbols appear throughout this document to indicate ...



Learn everything that goes into installing Enphase Energy Systems from microinverters to sunlight backup, from storage to communication.



Before installing or using the APS Micro-inverter, please read all instructions and cautionary markings in the technical documents and on the APS Micro-inverter system and the PV-array.



You can install individual PV modules in any combination of Module quantity, orientation, different type and power rate. The Ground wire (PE) of the AC cable is connected to the chassis ...



Monitor and manage environmental and security conditions over IP. Provides early warnings before critical events turn into disaster.



After installing the microinverters, follow the procedures in the IQ Gateway Quick Install Guide to activate system monitoring, set up grid management functions, and complete the installation.



Install the microinverters (including DC and AC connectors) under the PV modules to avoid direct exposure to rain, UV or other harmful weather events. Allow a minimum of 1.5 cm (3/4") below and ...

Contact Us

For more information, pricing, or custom data center solutions, please contact us:

Website: <https://www.yoahorroenergia.es>

Email: hello@yoahorroenergia.es

Phone: +233 54 318 7269

Address: Plot 28, Spintex Road, Accra, Greater Accra, Ghana

This document is for informational purposes only. Specifications subject to change without notice.

