

Installation of Low-Voltage Busbar Copper Buses



Overview

Building a busbar involves selecting appropriate conductive material (typically copper or aluminum), cutting and forming to required dimensions, drilling connection points, applying surface treatments, adding insulation, and testing for electrical performance. Busbars should be selected based on multiple critical factors, including circuit current, long-term permissible temperature rise conditions, and dynamic thermal stability requirements. more

Transformer low voltage side copper busbar connection In this video, we dive deep into the essential techniques and best practices for. A busbar is a metallic strip or bar, typically made from copper or aluminum, that conducts electricity within a switchboard, distribution board, substation, or other electrical apparatus. Its primary function is to distribute power from incoming feeders to outgoing feeders. They serve as a central connection point for multiple electrical circuits, allowing efficient power distribution while minimizing the need for. Eaton's Pow-R-Way III is a 600 V, totally enclosed, non-ventilated, sandwich bus design available with copper bus bars in ratings from 225–5000 A or with aluminum bus bars from 225–4000 A. With SIRIUS, SENTRON, SIVACON and ALPHA, we offer an innovative portfolio for standard-

compliant and demand-oriented applications. Efficient engineering tools and innovative.

Installation of Low-Voltage Busbar Copper Buses



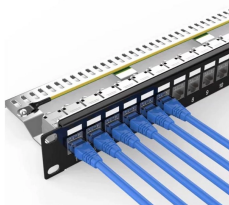
Home Services at The Home Depot has everything you need for your installation and repair needs. If you're remodeling your home or replacing older products, let us do it for you. Visit your local store, ...



Complete your interior or exterior home project with our installation services, whether you're updating your kitchen with new cabinets or elevating the look of your yard with fencing installation. Learn more ...



Transformer low voltage side copper busbar connection In this video, we dive deep into the essential techniques and best practices for connecting copper busbars on the low voltage...



Understand AC refrigerant types, their differences, and how to choose the right one for your home AC system to ensure efficiency, compliance, and performance. Here, you will learn how to tell if a pipe ...



Our experienced window & door install team will help you save money and time, by getting the job right the first time. Select The Services That Best Fits Your Needs. Get entry, patio & sliding doors ...



To install a busbar in an electrical panel, follow these steps for a safe and efficient process. First, ensure you select the appropriate busbar material, such as copper or aluminum, considering ...



Definition of installation noun in Oxford Advanced Learner's Dictionary. Meaning, pronunciation, picture, example sentences, grammar, usage notes, synonyms and more.



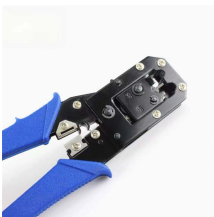
PMAX H is a patented range of busbar trunking that is utilised within building and industrial applications to deliver power to electrical loads. It is an alternative to traditional cabling and provides numerous ...



This standard covers busbars used for low-voltage assemblies, power distribution, photovoltaic power systems, and electrical energy control. The IEC 61439 busbar standard also ...



nVent ERIFLEX solutions are uniquely designed for low-voltage power and grounding connections used by OEMs and panel builders.



These guidelines govern the busbar processing and installation procedures for all low-voltage switchgear and power distribution enclosures manufactured by our facility.



Copper bus bars are plated with silver by a flashing process. The silver-plating of the conductor tabs provides an extremely durable contact surface for the spring loaded connections of bus plug stab ...



From in-home services to mount your new TV, installation for smart locks, or even setting up your printers, we are here to help. Call your Marysville Supercenter Walmart at 530-634-9751 to find out ...



It is usually necessary to joint busbars on site during installation and this is most easily accomplished by bolting bars together or by welding. For long and reliable service, joints need to be ...



Same Day Installation Same-day water heater installation is available Monday-Friday if you request install before noon and live within 30 miles of a Home Depot store.



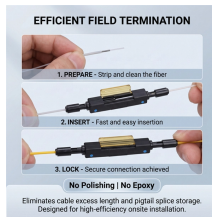
Our busbar systems for electrical installations offer a particularly easy way of fitting distribution systems with electrotechnical components. The modular design saves space, while quick assembly contacts ...



Get expert installation services from Mr. Handyman, including furniture assembly, TV mounting, and door installation. Contact us today for reliable, affordable solutions.



Shop Smart Home Services at Best Buy. Our tech experts can help with installation, set up and support to help keep your home devices connected and secure.



The meaning of INSTALLATION is the act of installing : the state of being installed. How to use installation in a sentence.



In this comprehensive guide, we'll walk you through the process of installing bus bars in electrical panels, covering safety precautions, tools required, installation steps, and best practices.

Contact Us

For more information, pricing, or custom data center solutions, please contact us:

Website: <https://www.yoahorroenergia.es>

Email: hello@yoahorroenergia.es

Phone: +233 54 318 7269

Address: Plot 28, Spintex Road, Accra, Greater Accra, Ghana

This document is for informational purposes only. Specifications subject to change without notice.

