

Installation of Explosion-proof and Corrosion-resistant Distribution Boxes in Nicaragua



Overview

Below, we will discuss the correct wiring methods for an explosion-proof distribution box and highlight key usage precautions. Proper installation, wiring, and usage are critical to ensuring the safety and functionality of these systems. When installing, please follow the instructions strictly and ensure installation by a professional. But beyond compliance paperwork, what makes these solutions truly valuable?

It's about protecting lives, preventing environmental. Explosion-proof and flameproof equipment is essential for safe operation in hazardous (classified) locations where flammable gases, vapors, or combustible dusts may be present. Correctly selected and installed equipment helps prevent ignition of explosive atmospheres while allowing industrial. Any installation of devices within a hazardous area as defined in the NEC® or ATEX Directive MUST BE in accordance with that device's CONTROL DRAWING and local ordinances. They are commonly made of aluminum, stainless steel, or heavy-duty cast metals.

Installation of Explosion-proof and Corrosion-resistant Distribution



Learn about explosion proof junction boxes—pricing, sizes, certifications, and installation tips for electricians and engineers. Shop certified ...



Understanding explosion proof wiring box solutions is essential for industries that prioritize safety and reliability. This guide will explore the latest developments and related industries focused ...



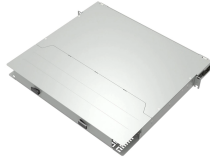
To meet diverse installation requirements, a variety of enclosure dimensions, terminals, and cable gland options are available. The modular design allows for tailored configurations that align with specific ...



Marine-Grade Aluminum: Lightweight yet strong, with natural corrosion resistance from salt-spray environments. Perfect for offshore platforms where every kilogram matters in helicopter transport. ...



All circuit wiring is run in conduit and junction boxes approved for explosion-proof installation. Explosion proof transducers and wiring must be installed according to ANSI/UL 1203-1994, Explosion-Proof ...



Proper installation, wiring, and usage are critical to ensuring the safety and functionality of these systems. Below, we will discuss the correct wiring methods for an explosion-proof...



This article provides a practical guide to explosion-proof and flameproof equipment in hazardous locations, focusing on basic principles, protection concepts, selection, installation, and ...



By following these guidelines, the installation and operation of explosion-proof equipment can be made safer, more efficient, and compliant with industry standards.



Learn about explosion proof junction boxes—pricing, sizes, certifications, and installation tips for electricians and engineers. Shop certified junction boxes today.



Proper installation, wiring, and usage are critical to ensuring the safety and functionality of these systems. Below, we will discuss the correct wiring methods ...



Install the box in a location with a lower risk of danger, away from collision risks, heat sources, and as much as possible, in a corrosion and moisture-resistant area to extend its service life.



Consequence: The installation elevation of the lighting explosion-proof distribution box (panel) does not comply with the regulations, the installation is not firm, and the box is not vertical.

Contact Us

For more information, pricing, or custom data center solutions, please contact us:

Website: <https://www.yoahorroenergia.es>

Email: hello@yoahorroenergia.es

Phone: +233 54 318 7269

Address: Plot 28, Spintex Road, Accra, Greater Accra, Ghana

This document is for informational purposes only. Specifications subject to change without notice.

