

Installation of Explosion-proof Lighting Distribution Boxes in Honduras



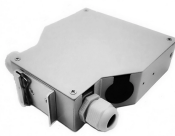
Installation of Explosion-proof Lighting Distribution Boxes in Honduras



Discover our hazardous environment-designed explosion-proof junction boxes (JB). Our reliable, verified JB solutions guarantee security and dependability in challenging conditions.



Versatile, shock-resistant, and explosion-proof lighting with a slim design, the XLN17-EM Series can be mounted in various hazardous locations, ranging from mines to petrochemical facilities.



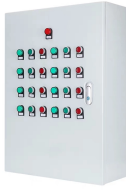
The installation of electrical installations in potentially explosive atmospheres must be carried out with the utmost care, in accordance with the design documentation, the technical and operating ...



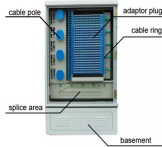
Our experts have in-depth knowledge and extensive experience in a wide variety of explosion-protection principles and will work with you to select the right solution for your application.



EXSolutions will coordinate the design, specification, procurement, delivery and installation of the explosion proof lighting products, glands, cables, junction boxes, and any other ancillary equipment ...



When installing, please follow the instructions strictly and ensure installation by a professional. 1. Open the terminal chamber cover, connect the cables through the cable gland to the ...



Atex control stations, explosion protected control units and distribution boxes made stainless steel maritime grade AISI 316L or AISI 304L. Atex Delvalle provides a custom build facility for Hazardous ...



Proper grounding is required for safety. This product must be installed in accordance with the applicable installation code by a person familiar with the construction and operation.



This article provides a practical guide to explosion-proof and flameproof equipment in hazardous locations, focusing on basic principles, protection concepts, selection, installation, and ...



Equipped with specialized hinge structure, which can prevent the flameproof joints from damage when opening and closing the panels, and greatly prolong the service life of box. The boxes can be ...

Contact Us

For more information, pricing, or custom data center solutions, please contact us:

Website: <https://www.yoahorroenergia.es>

Email: hello@yoahorroenergia.es

Phone: +233 54 318 7269

Address: Plot 28, Spintex Road, Accra, Greater Accra, Ghana

This document is for informational purposes only. Specifications subject to change without notice.

