

# **Installation of 288-core optical fiber cable junction box**



## Installation of 288-core optical fiber cable junction box



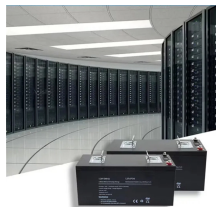
This fiber splicing horizontal enclosure comes with six splice trays that accommodate up to 48 unterminated cables each to give you more flexibility in adjusting cable lengths and connection types ...



Indoor/Outdoor NEMA-4 wall mount fiber optic splice enclosure to transition from OSP to premise optical cable. The WSE provides storage and protection of fiber splices.



From single mode to multimode fiber, we handle everything from installation and testing to certification and termination (ST - SC - LC - MTRJ connectors).



Easy Installation: A 288-core optical cable joint is easy to install and can be quickly integrated into existing fiber optic networks. This reduces the amount of downtime required for ...



Have any questions? Talk with us directly using LiveChat.



Remove the cap of the funnel and, using one side of a pair of scissors, bore out the collar inside the small end of the funnel to make it easier to slide onto the 288-fiber subunit.



The fiber optic splice closures (FOSC) are used to distribute, splice, and store the outdoor optical cables that enter and exit from the ends of the closure. It is tested under harsh conditions and stands up to ...



View and Download molex 144 FIBER installation instructions online. FIBER OPTIC CROSS CONNECTION CABINET. 144 FIBER enclosure pdf manual download. Also for: 288 fiber, 576 fiber.



Put the fiber optic cable entry cabinet through the base holes, strip out the fiber cable, fix the cable by cable clamps, fix cable strengthen core by cable fixing strengthen member kit.



This innovative mass-fusion splice wall cabinet is designed for applications in a building entrance facility providing an enclosure to splice outside plant (OSP) cables to inside plant (ISP) cables with a ...



Subscribed 46 5.6K views 3 years ago Fiber Field Guide Episode 1, Installing 288 Fiber LTC into Apex Splice Closure...more



The weld fused with the module into the box good, the double pigtail (jumper) ends respectively inserted into the appropriate adapter, the remainder fiber plate line ring, complete a fiber optic link.

## Contact Us

For more information, pricing, or custom data center solutions, please contact us:

Website: <https://www.yoahorroenergia.es>

Email: [hello@yoahorroenergia.es](mailto:hello@yoahorroenergia.es)

Phone: +233 54 318 7269

Address: Plot 28, Spintex Road, Accra, Greater Accra, Ghana

This document is for informational purposes only. Specifications subject to change without notice.

