

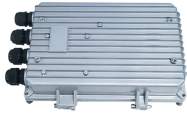
Installation diagram of explosion-proof distribution box connectors

More durable and robust

The outer layer is made of environmentally friendly PVC, which is soft and elastic. It can be stretched without damage, so you can use it with confidence.



Installation diagram of explosion-proof distribution box connectors



Explosion-proof electrical equipment, such as explosion-proof distribution boxes, is specifically designed for hazardous environments where flammable gases, vapors, or dust may be present. Proper ...



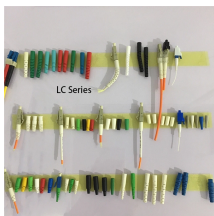
This manual details the installation, operation and maintenance instructions for type JBDB Junction/Terminal Box (flameproof). This product is ATEX and IECEx certified to meet the ...



Connector terminals may be installed within the KJ2028E(II) explosion-proof control box for power sources or signal distribution, and a power source module, fiber-optic transmission module, surge ...



Using the components removed in the previous steps and the components supplied with E10-077 kit, install the components onto the back panel to mimic the existing container terminal block ...



Wiring in explosion-proof distribution boxes during installation and maintenance is a common task, particularly when extending connection lines. Often, due to non-standard operations ...



Installation & Maintenance Instructions Junction Box Enclosures FM, CSA, ATEX, IECEx Certified.



Equipped with specialized hinge structure, which can prevent the flameproof joints from damage when opening and closing the panels, and greatly prolong the service life of box. The boxes can be ...



The purpose of this paper is to introduce the correct connection of explosion-proof junction box through detailed diagrams and instructions, to help readers better understand and master the relevant ...



When assembly, operation and maintenance, the operator must follow the requirements of the IEC 60079-14: latest version Explosive atmosphere-Part 14: Electrical installation design, selection and ...



Explosion-proof electrical equipment, such as explosion-proof distribution boxes, is specifically designed for hazardous environments where flammable gases, ...



All circuit wiring is run in conduit and junction boxes approved for explosion-proof installation. Explosion proof transducers and wiring must be installed according to ANSI/UL 1203-1994, Explosion-Proof ...



The design and installation of explosion-protected distribution and control boards having flameproof enclosures require considerable experience and careful consideration of relevant regulations in ...



DIRECTIONS FOR INSTALLATION WARNING:
Electrical power supply **MUST BE OFF** Before and during installation and maintenance.

Contact Us

For more information, pricing, or custom data center solutions, please contact us:

Website: <https://www.yoahorroenergia.es>

Email: hello@yoahorroenergia.es

Phone: +233 54 318 7269

Address: Plot 28, Spintex Road, Accra, Greater Accra, Ghana

This document is for informational purposes only. Specifications subject to change without notice.

