

# Installation Direction Diagram of Pigtail Splitter



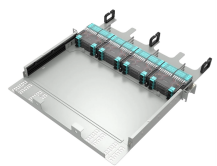
## Installation Direction Diagram of Pigtail Splitter



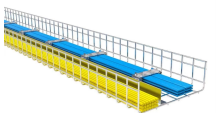
With a few simple steps, you can create a wiring diagram that will help you get the most out of your splitter. This way, you can be sure that your network will be up and running quickly and efficiently.



All Tripp Lite N202-Series Cat6 cables are made with 24 AWG solid wire cabling. The installation diagram shows a B127U-002-PDPH2 splitter/extender kit. The B127U-Series of transmitter/receiver ...



Channel Master es una marca registrada. Especificaciones sujetas a cambio. Todos los derechos reservados. © Channel Master, 2021. Channel Master est une marque déposée. Les caractéristiques ...



Installation should be performed by personnel familiar with good safety practice in handling electrical equipment. De-energize and ground all electrical systems before installing product.



This diagram will show you how to properly connect the splitter to your wall outlet, router, or any other network device. Additionally, it will provide instructions on how to properly route and ...



Installation should be performed by personnel familiar with good safety practice in handling electrical equipment. De-energize and ground all electrical systems before installing product. Check to be sure ...



An Ethernet Splitter Wiring Diagram will allow you to identify the components needed for your particular setup. It will also show you how the wires should be connected to ensure an efficient ...



What: This comprehensive technical whitepaper provides an in-depth analysis of the LC/UPC 1×4 pigtail type fiber splitter, exploring its underlying Planar Lightwave Circuit (PLC) micro ...



Pigtail wiring is crucial for safely connecting multiple circuit wires to a single device. Pigtails should be at least six inches long and match the gauge of the circuit wires.



These diagrams demonstrate how the wiring should be installed to create the desired network connection. Without an accurate and detailed diagram, users can encounter trouble trying to ...



Wire the Arc-Fault Circuit Breaker (see connection diagram). Connect the coiled white “pigtail” wire from the Arc-Fault Circuit Breaker to the panel or enclosure neutral bus terminal.



How to install pigtail and PLC splitter to ftth box  
#pigtail #plc #plcsplitter #ftth #ftthbox Wirenet  
Telecom Technology Co,Ltd; 6.12K subscribers 10

## Contact Us

For more information, pricing, or custom data center solutions, please contact us:

Website: <https://www.yoahorroenergia.es>

Email: [hello@yoahorroenergia.es](mailto:hello@yoahorroenergia.es)

Phone: +233 54 318 7269

Address: Plot 28, Spintex Road, Accra, Greater Accra, Ghana

This document is for informational purposes only. Specifications subject to change without notice.

