

Inspection Procedures for Distribution Boxes



Overview

Regularly inspect Low Voltage Distribution Boxes every three months to catch problems early and avoid costly repairs. Always clean the boxes using safe methods. Watch for warning signs like loose wires, burn marks . Septic system D box inspection & problem diagnosis: procedures for inspecting or diagnosing problems at the the septic drainfield distribution box, or the "D-box" or "drop box". If the D-box is leaking, smells, or is tipped, clogged, or otherwise not working this article describes how to diagnose & . The carrier must be installed to provide an unobstructed view during visual inspections and must provide at least 2. If a wall, floor, or ceiling. For distribution boxes, this means scrutinizing seven core areas: Production Machinery Capabilities (Can equipment maintain tolerances?

) Raw Material Traceability (Where do components really come from?

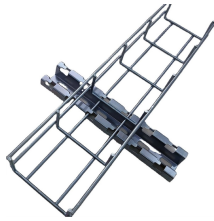
) IP-Rated Testing Procedures (How water/dust-resistant are units under stress?

) Environmental. The septic system's distribution box, often called the D-box, is a small but important component of the wastewater management infrastructure. Typically constructed from concrete or plastic, the D-box receives partially treated liquid effluent from the septic tank. Regular care. Check for signs of corrosion or rust. Internal Inspection Open.

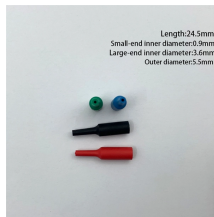
Inspection Procedures for Distribution Boxes



Regularly inspect Low Voltage Distribution Boxes every three months to catch problems early and avoid costly repairs. Always clean the boxes using safe methods. Turn off power, use dry ...



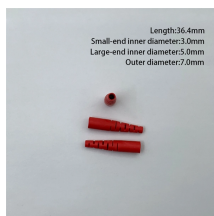
Master the proper maintenance and function checks for the septic system distribution box (D-Box).



Below are the 20 most critical distribution center processes that ensure efficient, accurate, and scalable warehouse operations. 1. Receiving. Goods arrive from suppliers or manufacturers and are checked ...



The carrier must be installed to provide an unobstructed view during visual inspections and must provide at least 2.5 centimeters (1 inch) of clearance from walls, floors, ceilings, ducts, cables, other ...



Knowing how to inspect and test a septic distribution box can help catch problems early and keep your septic system functioning efficiently. Keep reading to learn more.



Today, we'll break down exactly what separates the best from the rest. Forget cookie-cutter checklists - we're talking about the real, practical inspection points that determine whether a ...



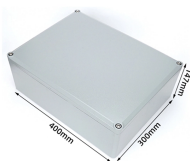
Inspect for any physical damage to the enclosure. Ensure that all labels and warning signs are legible. Examine for any signs of overheating or arcing. Verify that the box is securely mounted and that ...



Septic system D box inspection & problem diagnosis: procedures for inspecting or diagnosing problems at the the septic drainfield distribution box, or the "D-box" or "drop box".



The document provides a 16 item checklist for inspecting a main ...



The document provides a 16 item checklist for inspecting a main distribution board or panel board.



Regular inspections can detect potential hazards in advance and extend the service life of junction boxes. Combining scenario characteristics, ZCEBOX shares core inspection points and ...

Contact Us

For more information, pricing, or custom data center solutions, please contact us:

Website: <https://www.yoahorroenergia.es>

Email: hello@yoahorroenergia.es

Phone: +233 54 318 7269

Address: Plot 28, Spintex Road, Accra, Greater Accra, Ghana

This document is for informational purposes only. Specifications subject to change without notice.

