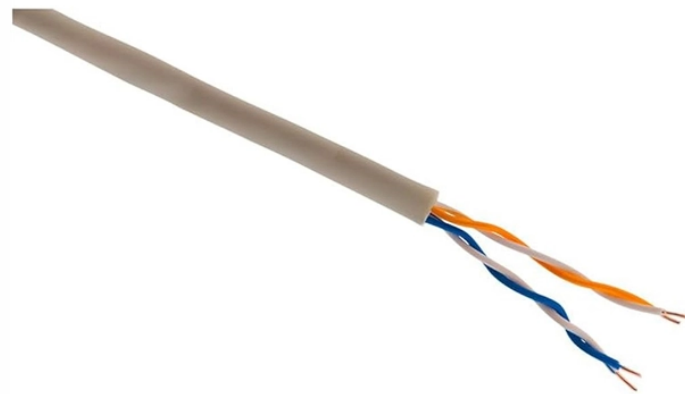


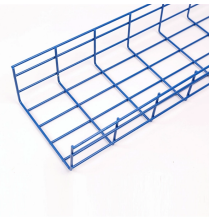
Insertion loss data of a 1-to-3 PLC splitter



Insertion loss data of a 1-to-3 PLC splitter



The low-insertion loss characteristics of the sophisticated PLC splitters produced by SDGI Cable are a product of core alignment perfection, low-return loss, and quality assurance.



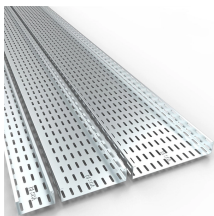
The document contains tables listing the insertion loss in dBm for various splitting ratios of an optical splitter, ranging from 1% to 99%. It also includes formulas for calculating insertion loss based on the ...



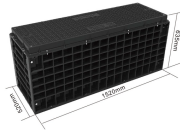
The loss at each port in a PLC splitter is a fundamental consideration for fiber optic network design. While theoretical calculations provide a baseline, actual splitter performance ...



How to measure fiber optic splitter insertion loss with calculation? The maximum allowable insertion loss for an optical splitter used in a PON system can be determined by using the ...



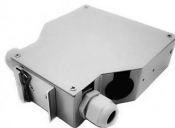
A splitter with 1×2 certain ratio configuration means that it has one input and two outputs. There are 1×4 plc splitter, 1×8 plc splitter, 1×16 plc splitter, 1×32 splitter, and so on. Here is a table of ...



FTTH / PON Engineering Tool FTTH / PON Splitter Loss Calculator Estimate whether an FTTH or PON optical link is feasible by calculating PLC splitter loss, fiber attenuation, connector loss, splice loss ...



A complete engineering guide to PLC splitters in FTTH networks. Learn splitter ratios, insertion loss, cascade design, FAT & closure integration, and how Quick ODN reduces deployment ...



PLC Fiber Splitter Solutions for FTTH Networks Low insertion loss, high uniformity, and stable optical performance for telecom operators, FTTH deployments, ODN networks, and data centers. Telcordia ...



Insertion loss is the ratio of the optical power launched at the given input port of the splitter to the optical power from any single output port. The insertion loss includes splitting loss and ...



Minimizing insertion loss from the optical splitter is crucial for conserving the power budget of a PON system. The table below illustrates typical losses for fiber couplers.

Contact Us

For more information, pricing, or custom data center solutions, please contact us:

Website: <https://www.yoahorroenergia.es>

Email: hello@yoahorroenergia.es

Phone: +233 54 318 7269

Address: Plot 28, Spintex Road, Accra, Greater Accra, Ghana

This document is for informational purposes only. Specifications subject to change without notice.

