

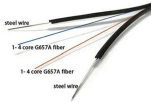
Industrial Primary and Secondary Distribution Boxes



Industrial Primary and Secondary Distribution Boxes



Primary distribution box: three-phase power supply, ground wire and zero wire are introduced from the transformer. Secondary distribution box: from the power line of primary distribution box to temporary ...



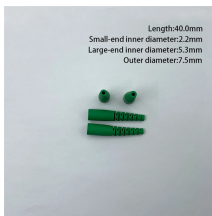
Several commonly used system topologies are presented here, along with the pros and cons of each. The figures for each of these assume that the distribution and utilization voltage are the same, and ...



Distribution substations come in many sizes and configurations. A small rural sub-station may have a nominal rating of 5 MVA while an urban station may be over 200 MVA. The figures show examples of ...



Designed for construction or large-scale projects as a main distribution point. Built to meet specific safety and operational standards for temporary construction sites.



Understanding the distinction between primary and secondary electrical transmission is crucial for professionals working in the electrical industry, as well as for anyone interested in how ...



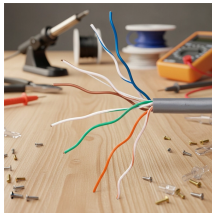
While designing the construction of a primary distribution substation, there are a number of different busbar arrangement alternatives for both voltage levels.



Primary distribution systems consist of feeders that deliver power from distribution substations to distribution transformers. A feeder usually begins with a feeder breaker at the ...



Understanding the fundamental distinction between Primary and Secondary distribution in electrical systems is pivotal for designing efficient and reliable electrical distribution systems tailored ...



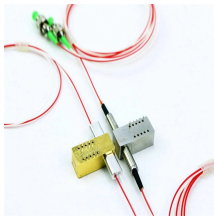
Utilities may have some control over and access to the energy stored in electric vehicles attached to the grid.



Classification of loads (Residential, Commercial, Agricultural and Industrial) and their characteristics.



This explanation aims to clarify the roles and functions of primary, secondary, and tertiary distribution boxes, enhancing the understanding of these critical components in electrical distribution ...



Understand the critical distinctions between primary (11kV-33kV) and secondary (400V-1kV) distribution systems, including equipment, protection schemes, and application scenarios.

Contact Us

For more information, pricing, or custom data center solutions, please contact us:

Website: <https://www.yoahorroenergia.es>

Email: hello@yoahorroenergia.es

Phone: +233 54 318 7269

Address: Plot 28, Spintex Road, Accra, Greater Accra, Ghana

This document is for informational purposes only. Specifications subject to change without notice.

