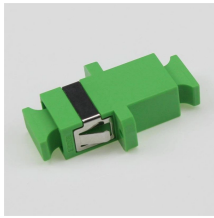


Indoor optical cable flame-retardant sheath



Indoor optical cable flame-retardant sheath



In this paper, a kind of flame retardant and fire-resistant optical cable is prepared with ceramic sheathing materials.



In this article, we will discuss the different types of outer sheath materials used in indoor fiber optic cables and the fire prevention levels associated with each type.

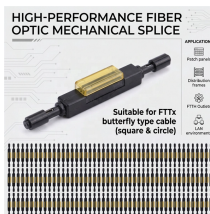
Length:14.5mm
Small-end inner diameter:2.0mm
Large-end inner diameter:3.5mm
Outer diameter:5.2mm



These indoor fiber optic cables are used exclusively within buildings and must have a flame-retardant jacket to fit this purpose. Flame resistant cable may be deployed in-duct (conduit) or cable tray.



It is halogen-free and flame-retardant, providing protection against secondary damage to electronic equipment during and after a fire. The outer sheath is constructed from black, UV-stabilized, and ...



Suitable for indoor installation and in ducts outdoors. This FireTuf fire resistant fibre optic range is fully compliant with fire resistant standards and flame retardant standards, guaranteeing the cables circuit ...



ems that need to be operational during fire. The cable has a patented design that ensures operation for more than 3 hours in fires up to 1000°C. The cable is halogen free and flame retardant to protect ...



Flame Retardance: For indoor installations or areas with strict fire codes, choosing materials like LSZH or Flame Retardant Polyolefin is essential. These materials prevent the spread ...



Indoor riser-rated cable jackets are held to a lower standard than plenum cables. The specially formulated, flame-retardant outer cable jacket and rugged construction of these cables facilitates ...



ETK Kablo's B2ca-classified fiber optic range provides low smoke emission, zero halogen content, and exceptional flame retardance. The design ensures data link continuity even during extended fire ...



RED LSZH UV resistant inner sheath and outer jacket. Aramid glass yarns provide protection and strength. Mono tube gel filled construction to block the ingress of water.

Contact Us

For more information, pricing, or custom data center solutions, please contact us:

Website: <https://www.yoahorroenergia.es>

Email: hello@yoahorroenergia.es

Phone: +233 54 318 7269

Address: Plot 28, Spintex Road, Accra, Greater Accra, Ghana

This document is for informational purposes only. Specifications subject to change without notice.

