

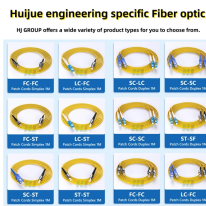
Hungarian hollow fiber G 654 E



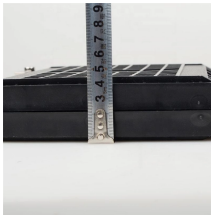
Hungarian hollow fiber G 654 E



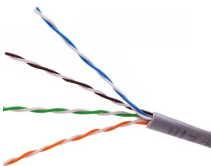
The G.654.E is a single-mode optical fiber with a larger effective area engineered specifically for ultra-long-haul and submarine networks.



Corning's TXF optical fiber is G.654.E compliant and the ultra-low-loss, large effective area terrestrial fiber is cost-effective for terrestrial core networks.



2. What is G.654.E? G.654.E fiber is a fiber featuring low attenuation and large core area, and is best suited for terrestrial long-haul and high-capacity transmission links.



International Standards STL G654E 125 Fibre complies or exceeds the recommendation of ITU-T G.654.E.



Ultra-low loss (ULL) optical fibers, PureAdvance™ series compliant with G.654.E, support high-capacity long-haul terrestrial networks. Employing pure silica core technologies, we promise to contribute to ...



In metropolitan area networks, some optical transmission systems use wavelengths within the cut-off wavelength range of G.654.E fibre, so G.654.E fibre is not suitable for use in metropolitan transmission.



By replacing G.652.D fibre with G.654.E, the improved OSNR and lower signal degradation allow the operator to eliminate up to half of the existing repeater stations.



Both fibers are designed for durability, but G.654.E is often preferred in submarine and ultra-long-haul deployments due to its superior performance under extreme conditions.



G.654.E single-mode fiber is specifically designed to meet the requirements of long-haul transmission in high-capacity networks. In this comprehensive guide, we will provide an overview of ...



Our study explores how G.654.E fiber—thanks to its larger Mode Field Diameter (MFD) and ultra-low attenuation— drastically improves performance in terms of throughput and reach, and reduces ...

Contact Us

For more information, pricing, or custom data center solutions, please contact us:

Website: <https://www.yoahorroenergia.es>

Email: hello@yoahorroenergia.es

Phone: +233 54 318 7269

Address: Plot 28, Spintex Road, Accra, Greater Accra, Ghana

This document is for informational purposes only. Specifications subject to change without notice.

