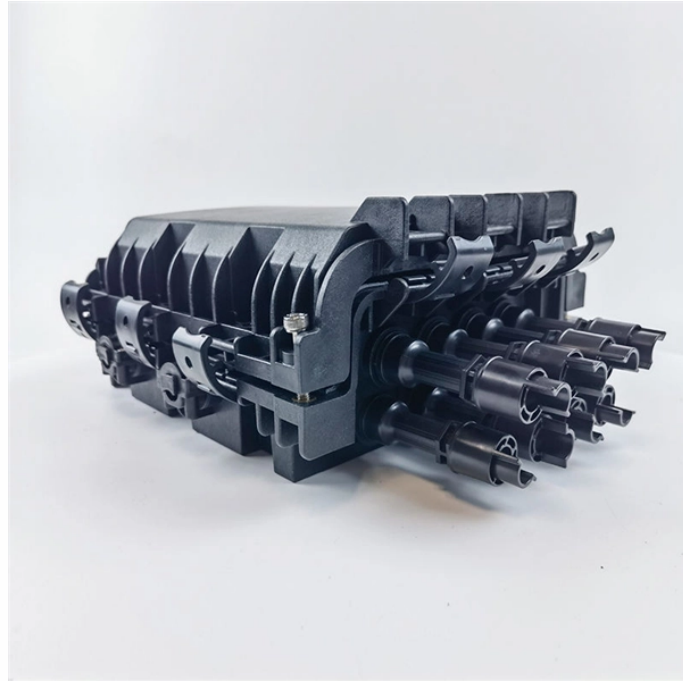


Huawei base station optical module receives and transmits light



Overview

How Do I View the Transmit and Receive Optical Power of an Optical Module?

Run the display transceiver verbose command. In the command output, RX Power (dBm) displays the receive power of the optical module, and TX Power (dBm) displays its transmit power. On an optical network, a sender needs to convert electrical signals into optical signals before sending them to a receiver, and the receiver needs to convert received optical signals into electrical signals. It features a multi-mode modular design and supports three working modes: GSM mode, GSM+UMTS dual mode, and UMTS mode through configuration of different software. In addition, the DBS3900 supports smooth. Cabinet Boards inside the cabinet For example, the timing/transmission and management unit (TMU), the transceiver unit (TRX), and the combiner and divider unit (CDU) Cables Fibers, E1 trunk cables, signal cables, and power cables Issue 01 (2006-11-18) Huawei Technologies Proprietary. This manual. A BBU is a baseband unit. This document describes the exterior and functions of a BBU5900 as well as the configurations, functions, application scenarios, and specifications of boards in the BBU5900 to help users comprehensively

understand the BBU5900 functions. Unless otherwise specified, "BBU" in.

Huawei base station optical module receives and transmits light



Run the display transceiver verbose command to check the power of the optical module. Check whether the interface status and data forwarding are normal.



Run the display transceiver verbose command. In the command output, RX Power (dBm) displays the receive power of the optical module, and TX Power (dBm) displays its transmit power. Transceiver ...



For checking transmission links on Huawei routers, it is important to know how to check the optical power of 400GE modules or interfaces for troubleshooting and to ensure the desired or optimal range ...



- The Universal E1/T1 Lightning Protection (UEL) is a universal E1/T1 surge protection unit. The UELP is optionally installed in the SLPU (Signal Lightning Protection Unit) or BBU. Each UELP provides ...



In addition to E1 transmission, the BTS30/312 also provides the built-in transmission system that supports external optical transmission ports, such as the 155 M SDH optical port and PON optical port.



- The Universal E1/T1 Lightning Protection (UELPL) is a universal E1/T1 surge protection unit. The UELPL is optionally installed in the SLPU (Signal Lightning ...



Check whether the optical module is Huawei-certified. If it is not certified by Huawei, replace it with a Huawei certified one. Remove and reinstall the optical module. If this resolves the ...



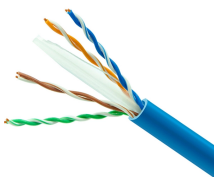
If an optical module is installed in a running device, you can run the display interface transceiver command to view parameters of the optical module, including the center wavelength, transmission ...



DBS3900 Dual-Mode Base Station is the fourth generation base station developed by Huawei. It features a multi-mode modular design and supports three working modes: GSM mode, GSM+UMTS ...



This document provides a hardware description for RFUs used in Huawei's 3900 series base stations, detailing their panels, functions, principles, indicators, and ports.



There are different types of optical modules which are configured depending on the actual application scenarios, see CPRI Fiber Optic Cable in 5900 Series Base Station Cables.

Contact Us

For more information, pricing, or custom data center solutions, please contact us:

Website: <https://www.yoahorroenergia.es>

Email: hello@yoahorroenergia.es

Phone: +233 54 318 7269

Address: Plot 28, Spintex Road, Accra, Greater Accra, Ghana

This document is for informational purposes only. Specifications subject to change without notice.

