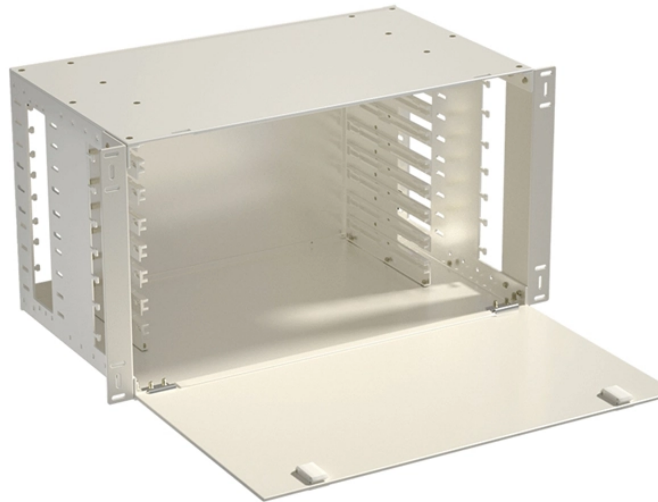


# Huawei Switch Optical Attenuation Parameters



## Overview

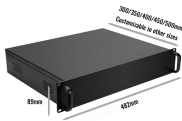
Designed for high precision and reliability, it offers a solid 7dB attenuation level and incorporates an LC/PC connector with an exceptional return loss of 45dB. This product is tailored to meet the rigorous demands of high-speed optical networks, ensuring superior performance and. Commonly used connector types are LC (applicable to all the SFP, SFP+, and XFP modules), SC, and MPO (applicable to 150 m QSFP+ and CXP modules). Select optical fibers with connectors supported by the optical modules. Maximum distance over which optical signals can transmit. Optical signals sent. Optical modules are widely used in switches, network interface cards (NICs), routers, and other communication devices. During use, reading optical module information helps understand its real-time operating status, enabling faster troubleshooting of link abnormalities. The specific viewing information is as follows: . HUAWEI TECHNOLOGIES CO. Copyright © Huawei Technologies Co. All other trademarks and trade names mentioned in this document are the property of their respective holders. Related Information Video Identify a Huawei-Certified Optical Module Run the display transceiver [ interface interface-type interface-number | slot slot-id ] [ verbose ]. Today, ETU-LINK will introduce how to query

the information of optical module on Huawei switch.

## Huawei Switch Optical Attenuation Parameters



The Huawei SS-OP-ATN-LC-7 is a premium quality light fixing attenuator, optimized for use between 1260 nm and 1620 nm. Designed for high precision and reliability, it offers a solid 7dB attenuation ...



The following uses the Moduletek SFP-10G-LR module connected to a Huawei S6700 switch as an example to introduce how to read information of the connected optical module on a Huawei switch.



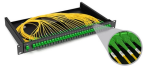
If an optical module is installed in a running switch, you can run the display transceiver command to view parameters of the optical module, including the center wavelength, transmission distance, fiber types ...



Optical signals sent from different types of sources can transmit over different distances due to negative effects of optical fibers, such as dispersion and attenuation.



If an optical module is installed in a running switch, you can run the display transceiver command to view parameters of the optical module, including the center wavelength, transmission ...



On Huawei CloudEngine switches, optics compatibility depends on both the physical module standard (SFP, SFP+, QSFP+, QSFP28, etc.) and the switch's expectations for electrical ...



The following picture is the optical module information queried on the Huawei switch, which is marked with the Chinese translation of the Optical ...



The following picture is the optical module information queried on the Huawei switch, which is marked with the Chinese translation of the Optical Module English parameters for easy ...



Use the command display transceiver to view the optical module information of all optical ports, and use the command display transceiver interface interface-type interface-number to view the ...



Taking the Huawei 5700 series switches as an example, the commands to view optical module information are as follows:



A switch must use optical or copper modules that have been certified for use on Huawei switches. Non-certified optical or copper modules cannot ensure transmission reliability and may affect service ...

## Contact Us

For more information, pricing, or custom data center solutions, please contact us:

Website: <https://www.yoahorroenergia.es>

Email: [hello@yoahorroenergia.es](mailto:hello@yoahorroenergia.es)

Phone: +233 54 318 7269

Address: Plot 28, Spintex Road, Accra, Greater Accra, Ghana

This document is for informational purposes only. Specifications subject to change without notice.

