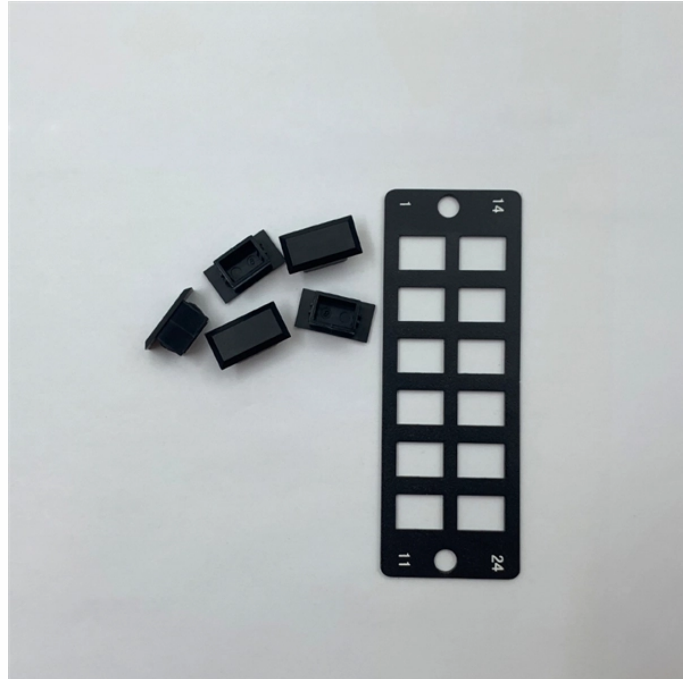


How to wire the power supply for a cold aisle server rack



How to wire the power supply for a cold aisle server rack



Equipped with a removable **Mounting Plate** inside the enclosure, enabling customized drilling and secure component mounting.

Modular datacenters deploy hot and cold aisles and use in-row cooling units. Blind panels are mounted in the space of the rack where no servers are mounted and 95% of the cold air can be directly ...



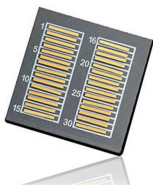
Cold aisle containment systems use doors at aisle ends, ceiling panels or lids above racks, and structural frames to create enclosed zones where cold supply air flows directly to IT equipment ...



Aisle containment ceilings, walls and end of row doors are designed to help maintain optimal operating temperature in server rooms and data centers in order to lower data center energy demands and ...



Complete cold aisle containment guide for data centers. Learn CAC benefits, implementation steps, and achieve 35% cooling cost reduction.



Learn how server rack cooling prevents overheating, boosts performance, and ensures reliability with expert tips and advanced solutions.



My switches designed for ToR in datacenter are all power supply to port airflow, so they exhaust into the hot aisle when mounted at the back of the rack. They are both Cisco and Dell switches.



Blind mate power rails are static rails that include extra power pass-through bracket assemblies to allow for the ability to connect power and then remove or service the HS5610 without ...



The power shelves convert AC power into nominal 50V-51V DC output and distribute it through the bus bar to the rack components. Multiple power shelves are used in the rack to supply ...



In most cases, the rack mount can be used within these aisle cooling containment solutions. Below are general guidelines for assessing the installation of a rack mount in a hot or cold aisle cooling ...



By isolating the cold aisle, containment reduces unintended mixing of cold supply air with hot exhaust air, maintaining uniform, predictable temperatures across all racks.

Contact Us

For more information, pricing, or custom data center solutions, please contact us:

Website: <https://www.yoahorroenergia.es>

Email: hello@yoahorroenergia.es

Phone: +233 54 318 7269

Address: Plot 28, Spintex Road, Accra, Greater Accra, Ghana

This document is for informational purposes only. Specifications subject to change without notice.

