

How to wire a double-layer grounding busbar



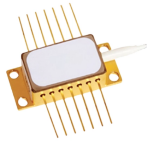
Overview

Installing a ground bar in a subpanel is an important step to ensure the safety and proper functioning of the electrical system. NEC Article 250 outlines the specific wires and jumpers needed for a safe system: Connects the ground rod to the grounding bus bar in the main panel. Sized according to NEC Table 250.66, based on service-entrance conductor size. The safety wire running with branch circuits (bare copper/green wire). Our sales engineers are readily available to answer any of your questions and provide you with a prompt quote tailored to your needs. Imagine transforming a chaotic web of electrical connections into a streamlined, efficient powerhouse. This document does not replace any regional, state, provincial, federal or national laws, regulations or standards that apply to the installation, electrical safety. The principles outlined herein encompass a comprehensive range of busbar fabrication techniques, including but not limited to cutting, bending, drilling, and surface treatment. While primarily focused on low-voltage applications, many of these guidelines—with the exception of specific electrical.

How to wire a double-layer grounding busbar



Imagine transforming a chaotic web of electrical connections into a streamlined, efficient powerhouse. Busbars are the unsung heroes of electrical panels,



Your ultimate guide to busbar processing and installation is here. From beginner to expert, we cover everything you need to know in this mechanical field.



If a PV system includes multiple inverters, each one must be individually connected to the main grounding busbar to ensure proper grounding. Never connect the grounding cables of inverters in ...



Learn how to create an electrical panel grounding diagram, ensuring safe and correct grounding connections for your electrical system.



Wire is an encrypted communication and collaboration app created by Wire Swiss. It is available for iOS, Android, Windows, macOS, Linux, and web browsers such as Firefox.



A subpanel needs a four-wire feed: two hot conductors, one neutral, and one separate equipment grounding conductor. The neutral bus in the subpanel must be isolated from the panel ...



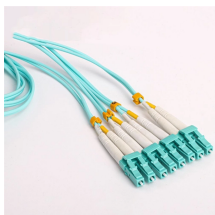
Audio Messages with Voice Filters: Wire lets you record and send audio messages with intelligent voice filters fully encrypted. Discover how Wire enables secure, compliant, and seamless collaboration for ...



Get everything done in one app. • Simple to use and beautifully designed • A single tool to make small teams and complex organizations more productive • Security and privacy at the core Wire offers a ...



Learn how secure communication works: end-to-end encryption, MLS group security, identity control and approved configurations explained. Discover how Wire enables secure, compliant, and seamless ...



Download Wire to experience secure, end-to-end encrypted communication. Access the latest features and updates to enhance your collaboration today.



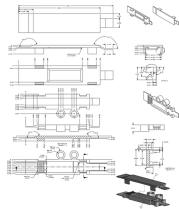
NEC Article 250 outlines the specific wires and jumpers needed for a safe system: Connects the ground rod to the grounding bus bar in the main panel. Sized according to NEC Table 250.66, based on ...



This document provides guidelines for interlocking systems in high voltage switchgear. It contains examples of interlocking configurations for single and double busbar arrangements, including line ...



Wire is a private messaging app built with business customers in mind, but its free version is useful for staying in touch with family and friends across various platforms. Wire makes...



It is usually necessary to joint busbars on site during installation and this is most easily accomplished by bolting bars together or by welding. For long and reliable service, joints need to be ...



Wire keeps all your communication end-to-end encrypted, protecting each interaction within its own locked fortress. Only you and your recipients can access the information.



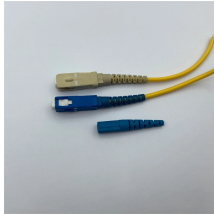
Here''s a general guide on how to install a ground bar in a subpanel: Note: Before performing any electrical work, make sure to turn off the power to the panel and follow all safety...



Use Wire the way you need it. Explore Wire''s inclusive design and accessibility features.



Explore everything you need to know about the electrical ground bus bar, a critical component for safe and efficient electrical systems.



End-to-end encryption ensures privacy for projects, client interactions, and more with Wire for Teams & Small Business. Start for free and grow with ease.

Contact Us

For more information, pricing, or custom data center solutions, please contact us:

Website: <https://www.yoahorroenergia.es>

Email: hello@yoahorroenergia.es

Phone: +233 54 318 7269

Address: Plot 28, Spintex Road, Accra, Greater Accra, Ghana

This document is for informational purposes only. Specifications subject to change without notice.

