

How to wire a distribution box with a transformer



Overview

In this step-by-step guide, we will walk you through the process of wiring a current transformer, providing clear instructions and detailed diagrams to help you navigate the process with ease. The distribution transformer is a key component in the electrical power distribution system. It is responsible for stepping down the high voltage from the transmission lines to a lower voltage that can be used by residential, commercial, and industrial customers. At the same time, ensure there is sufficient safety distance between the current transformer and other. In the USA and Canada (following NEC and CEC), distribution transformers typically receive 4. The primary side of the distribution transformer is supplied by two conductors. A distribution board unit installed in the buildings which firstly receive the incoming single phase electric supply (AC low voltage (LV) (230V AC or 120V AC in US) from transformer secondary through electric pole and energy meter or the distribution company's electric service provider outlets is. The fundamental approach to connecting any transformer or voltage transformer is centered on strict adherence to safety protocols. Following identification, the process moves sequentially. A conductor carrying current has a magnetic field around

it.

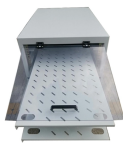
How to wire a distribution box with a transformer



Install in the correct direction: The L1 terminal of the primary side of the current transformer should be connected to the power inlet wire, and the L2 terminal should be connected to the load...



In the following, the distribution power transformer features, construction and protection and their influence to the complete distribution system performance are discussed.



In this video, we'll walk you through the process of wiring a home distribution box with a detailed connection diagram. Whether you're an electrician or a DIY enthusiast, this guide will help you ...



Find out how to properly wire an electrical panel box with a comprehensive diagram and step-by-step instructions.



In this step-by-step guide, we will walk you through the process of wiring a current transformer, providing clear instructions and detailed diagrams to help you navigate the process with ease.



Knowing what to do when troubleshooting a distribution transformer translates into a more secure and reliable connection. A distribution transformer wiring diagram provides an overview of the ...



How to connect a voltage transformer? Master engineer-level PT/VT wiring, LOTO protocol, Burden calculation, and Delta-Wye configuration for system safety and accuracy.



In this video, we'll walk you through the process of wiring a home distribution box with a detailed connection diagram. Whether you're an electrician ...



These three wires enter the meter box and then connect to the main panel. In the following tutorial, we will show how to wire 120V single-phase and 240V split-phase circuit breakers and loads inside a ...



The main purpose of a distribution transformer is to transform the primary voltage level (usually high) to a specific secondary voltage level which is required for specific connected equipment.



By following this step-by-step guide, electricians and technicians can effectively interpret distribution transformer wiring diagrams, enabling them to install, maintain, and troubleshoot transformer ...

Contact Us

For more information, pricing, or custom data center solutions, please contact us:

Website: <https://www.yoahorroenergia.es>

Email: hello@yoahorroenergia.es

Phone: +233 54 318 7269

Address: Plot 28, Spintex Road, Accra, Greater Accra, Ghana

This document is for informational purposes only. Specifications subject to change without notice.

