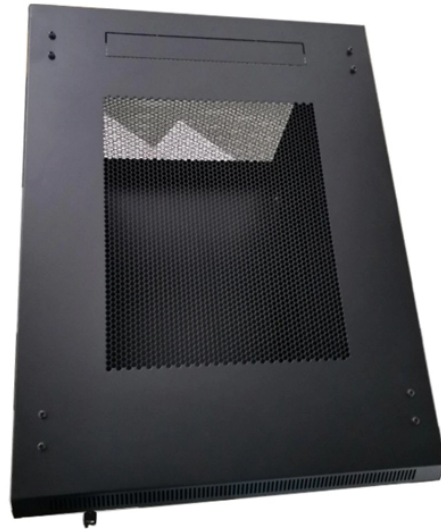


# How to use steel trough-type cable trays



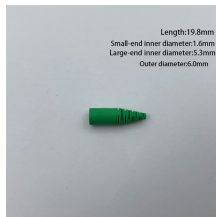
## How to use steel trough-type cable trays



This installation guide provides comprehensive instructions for the assembly, cutting, and installation of the Trough (P31) cable tray system.



Our wind certification report provides you with list of acceptable B-Line series cable tray supports, fittings and covers based off of the environmental conditions, cable loading, and type of cable tray in your ...



This guide is written to help you understand when trough type cable trays are the right choice, how they are designed, how to specify them correctly, and how they perform in real ...



A professional guide to trough type cable trays. Explore load capacity charts, installation guidelines, advantages over ladder type, and key selection criteria for your project.



Using a unique joining method that mechanically locks components together without fasteners or heat, this wiring trough ships completely assembled to save both time and labor. Designed for indoor use, ...



It eliminates sharp top edges to keep installers and cables safe. Patented fast splices, bends and turns are available as stocked items. Jobsite fabrication is kept to a minimum and requires little training for ...



In designing supports for a cable tray system, consideration should be given to the loads associated with future cable additions and any additional loading that may be applied to the cable tray system (e.g., ...



) To install: place 1 part of cover clamp around trough tray cover and tray assembly. Place 2nd part around opposite end of Trough Tray, align clamp holes and install hardware.



This guide covers the critical steps, from selecting the right electrical cable tray and performing accurate cable fill calculations to managing a safe cable pull through and ensuring all bonding and grounding ...



Some applications may require the cable tray to support the weight of a single, dead object in addition to the cable loads. Specifications typically require this to be applied at the midpoint of the span between ...

## Contact Us

For more information, pricing, or custom data center solutions, please contact us:

Website: <https://www.yoahorroenergia.es>

Email: [hello@yoahorroenergia.es](mailto:hello@yoahorroenergia.es)

Phone: +233 54 318 7269

Address: Plot 28, Spintex Road, Accra, Greater Accra, Ghana

This document is for informational purposes only. Specifications subject to change without notice.

