

# How to use an optical port to electrical port module



## Overview

Learn step-by-step how to connect fiber optic cables to SFP modules. Most gigabit switches are equipped with both RJ45 electrical ports and SFP optical ports. Fiber optic cables, on the other hand, transmit data using light. The following article will share with you the knowledge and difference between optical and electrical port module fast:

- What is an electrical. The Combo interface, also known as the optical-electrical multiplexing interface, consists of two Ethernet ports (one optical and one electrical) on the device panel, and there is only one forwarding interface inside the device.



## How to use an optical port to electrical port module



Align the module with the device's SFP port, ensuring TX/RX labels match the cable's direction. Gently push the module until it clicks into place (a latch will secure it).



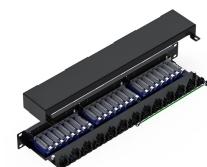
□ What is an optical port module. The optical port is the physical interface for connecting fiber optic cables, and the optical ports on the module are usually of several types, such as LC, SC, ...



In fact, electrical port modules deliver performance comparable to that of optical port modules while boasting unique advantages. This article will share relevant knowledge and key differences between ...



Insert the Gigabit electrical port module into the SFP optical port, and then connect the Category 6 network cable to the Gigabit RJ45 port. This method realizes SFP optical port to RJ45 ...



Assuming it's connecting them, then you can't do it directly. You need to have the correct media and speeds to do it. Typically with fiber you have an SFP (or GBIC) to plug in and adapt to ...



For related commands, refer to [How to Read Optical Module Information on Huawei Switches](#).  
 Note: By default, the optical interface of the Combo interface is in the disabled state; use ...



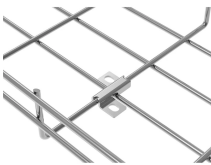
Some transceivers combine these into a single fiber using bidirectional (BiDi) technology. In summary, you cannot directly connect fiber optic cable to Ethernet; you need a media converter or ...



Match different: the electric port module is usually used with Category 5, Category 6, Super Category 6 or Category 7 cables, while the optical module is usually connected with the optical fiber patch cords.



Before using the light to power transceiver need to wear anti-static gloves or anti-static bracelets, to prepare for anti-static. After gently removing the optical to electrical transceiver, observe ...



As shown in Figure 3, an SFP+ electrical port module is inserted into a 10G optical port switch, and the opposite end is connected via a network cable to a 10M/100M/1000M/2.5G/5G/10G ...

## Contact Us

For more information, pricing, or custom data center solutions, please contact us:

Website: <https://www.yoahorroenergia.es>

Email: [hello@yoahorroenergia.es](mailto:hello@yoahorroenergia.es)

Phone: +233 54 318 7269

Address: Plot 28, Spintex Road, Accra, Greater Accra, Ghana

This document is for informational purposes only. Specifications subject to change without notice.

