

How to use a beam splitter on an optical module



Overview

Step-by-Step Guide on Using a Beamsplitter Cube Step 1: Understanding the

Cube Orientation: A beamsplitter cube is a prism-shaped optical component with two input and two output faces. Let's explore the best practices for deploying this crucial component. Conversely, it can also combine multiple signals into one. Its primary role is in Passive Optical Networks (PON), which are the foundation of. For purchasing, use the RP Photonics Buyer's Guide for beam splitters. It provides an expert-curated supplier directory, buyer-focused technical background information, and structured selection criteria to support professional procurement decisions. What are Beam Splitters?

A beam splitter (or. Beam splitters are a fundamental element in optical systems. These versatile devices split an incident light beam into two or more separate beams, each with specific optical properties.

How to use a beam splitter on an optical module



As a noun use means "purpose." As a verb, use means either "put to work," or "work something until there isn't anything left," unless you use your friend, meaning you exploit her.



An Optical Splitter (also known as a fiber optic splitter or beam splitter) is a passive optical power management device. "Passive" means it needs no electricity.



An optical splitter allows the split signal to exit the device and safeguard stable transmission along separate channels. The distribution of the signal is determined by the splitting ...



Explore the definition of the word "use," as well as its versatile usage, synonyms, examples, etymology, and more.



In this blog, we will explore the step-by-step process of using a beamsplitter cube effectively, along with some common applications that benefit from this powerful optical tool.



If you have a use for something, you need it or can find something to do with it.



Beam splitters are devices for splitting a laser beam into two or more beams. There are different types, including polarizing and non-polarizing versions.



A beam splitter is an optical device that splits beams (such as laser beams) into two (or more) beams. Beam splitters typically come in the form of a reflective device that can split beams into exactly ...



Beam splitters are a fundamental element in optical systems. Beam splitters are, in essence, optical components used to divide a single light source (usually a laser) into two separate ...



Use can be both a verb and a noun, while usage can only function as a noun. Use has a wide range of definitions, as either a verb or a noun.



Let's consider the basic 1x4 split configuration: It separates an incident light beam from a single input fiber cable into four light beams, transmitting them through four individual output fiber ...



There are two main manufacturing technologies for optical splitters, each with its own advantages and ideal use cases. The choice between them depends on your application requirements.



USE definition: 1. to put something such as a tool, skill, or building to a particular purpose: 2. to reduce the.... Learn more.



The meaning of USE is to put into action or service : avail oneself of : employ —often used with for; often followed by to + a verb. How to use use in a sentence.



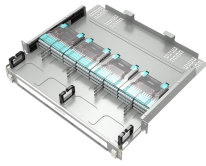
In optical communication networks, optical splitters play a crucial role in efficiently dividing and distributing signals. Proper placement and usage are essential for optimizing signal ...



Beamsplitters are optical components used to split incident light at a designated ratio into two separate beams. Additionally, beamsplitters can be used in reverse to combine two different beams into a ...



to come (also fall, go, etc.) into use: to be introduced into customary or habitual employment or practice; to begin to be used; esp. (of vocabulary, syntax, etc.) to be introduced into common usage.



There are two main manufacturing technologies for optical splitters, each with its own advantages and ideal use cases. The choice between them ...

Contact Us

For more information, pricing, or custom data center solutions, please contact us:

Website: <https://www.yoahorroenergia.es>

Email: hello@yoahorroenergia.es

Phone: +233 54 318 7269

Address: Plot 28, Spintex Road, Accra, Greater Accra, Ghana

This document is for informational purposes only. Specifications subject to change without notice.

