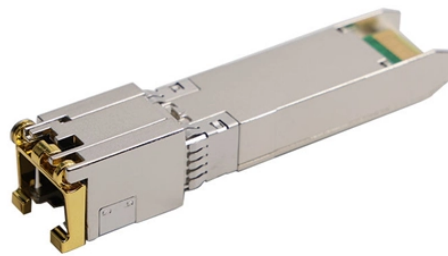


How to test a light tube with a multimeter



Overview

This guide will provide a comprehensive, step-by-step approach to testing a tube light using a multimeter. Troubleshooting a faulty tube light can seem daunting, but with a basic understanding of electrical circuits and the proper use of a multimeter, you can quickly diagnose the problem and determine whether the tube, the ballast, or another component is the culprit. more In this video you can see very clearly how to test the SMD LED inside this light using a multimeter and how the SMD LED circuit connection. Can you test an LED light with a multimeter?

Yes, you absolutely can test an LED light with a multimeter! It's a straightforward process that helps you figure out if your LED is working or if it's the source of a problem in your circuit. Perhaps it's a simple wiring problem, a.

How to test a light tube with a multimeter



This comprehensive guide will delve into the intricacies of LED tube light testing, providing practical steps and expert insights to help you master this essential skill.



The step-by-step guide on how to test LED tube light with a multimeter is a comprehensive and easy-to-follow mechanism for ensuring that your LED tube ...



Multimeters can help diagnose various issues such as a lack of power, faulty wiring, or problems with the light fixture itself. By understanding how to use a multimeter and perform a series ...



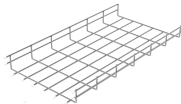
Before you start testing a tube light with a multimeter, it's essential to understand the potential hazards and take the necessary steps to protect yourself. This section outlines the key ...



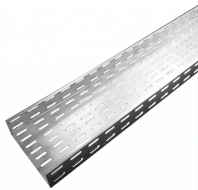
The testing procedures included a visual inspection, verifying that the power is off, removing the LED tube, setting the multimeter, performing a continuity test, conducting a voltage test ...



One essential tool for diagnosing LED tube light issues is a multimeter. This blog post will provide a step-by-step guide on how to test LED tube light with multimeter, ensuring accurate and ...



Yes, you absolutely can test an LED light with a multimeter! It's a straightforward process that helps you figure out if your LED is working or if it's the source of a problem in your circuit.



The step-by-step guide on how to test LED tube light with a multimeter is a comprehensive and easy-to-follow mechanism for ensuring that your LED tube light is functioning correctly.



To test a fluorescent tube light, set the multimeter to resistance mode. Then, place the black lead on one pin of the fluorescent bulb and the red one on the other, and check the ohm value.



We will delve into the types of tube lights, the functions of a multimeter, critical safety precautions, and detailed testing procedures for various components, ultimately enabling you to ...



In this video you can see very clearly how to test the SMD LED inside this light using a multimeter and how the SMD LED circuit connection works. ...more

Contact Us

For more information, pricing, or custom data center solutions, please contact us:

Website: <https://www.yoahorroenergia.es>

Email: hello@yoahorroenergia.es

Phone: +233 54 318 7269

Address: Plot 28, Spintex Road, Accra, Greater Accra, Ghana

This document is for informational purposes only. Specifications subject to change without notice.

