

How to set up a router for static IP fiber optic internet connection



Overview

Login to your router — access the admin panel. Find DHCP reservation — look under "LAN", "DHCP", or "Address Reservation". This article contains example configurations you can use to help you set up your network with static IP addresses. Most routers provide a dynamic IP address by default, which means that this address can change every time the router is rebooted or connected to the network. Using an Ethernet cable, plug a computer into the LAN port on the bottom of your C5500XK SmartNID. I recently configured a /28 static IP block on my AT&T Fiber connection using the Nokia BGW320-505 router, and this guide will walk you through the steps to set it up with confidence.

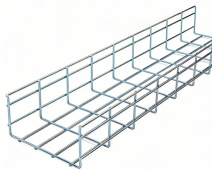
How to set up a router for static IP fiber optic internet connection



However, some situations require a static IP address to ensure reliable and consistent access to devices on your network. Fortunately, setting a static IP on your router is not a difficult ...



However, setting up a fiber optic connection to your router can seem daunting if you're unfamiliar with the process. In this guide, we'll walk you through how to connect a fiber...



Static routing allows you to add routers manually to the routing table. If a change or a failure occurs, traffic will not be rerouted until repaired by the administrator.



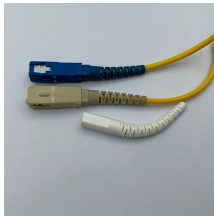
This article contains example configurations you can use to help you set up your network with static IP addresses. For more information on setting up your network, consult with your network expert or ...



I recently configured a /28 static IP block on my AT& T Fiber connection using the Nokia BGW320-505 router, and this guide will walk you through the steps to set it up with confidence.



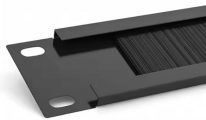
This article will guide you on setting up your Linksys router with a static IP account and the information you need to obtain from your ISP before setting up your ...



This article will guide you on setting up your Linksys router with a static IP account and the information you need to obtain from your ISP before setting up your router with a static IP.



If you have CenturyLink Fiber Internet with a SmartNID, here's how to set up your static IP addressing. Follow these steps to configure static IP through the user settings.



Here's how to set a Static IP address (or DHCP reservation) for any device on your network. An IP address is a unique identifier for a specific device on your network. Your router...



Here's how to set a Static IP address (or DHCP reservation) for any device on your network. An IP address is a unique identifier for a specific device on your network. Your router...



Configuring your router for fiber internet ensures you get the most out of your high-speed connection. By following these detailed steps, you will enjoy faster, more reliable, and secure internet ...



Find DHCP reservation — look under "LAN", "DHCP", or "Address Reservation". Add a reservation — enter the device's MAC address and the desired static IP. Save and reboot — restart ...

Contact Us

For more information, pricing, or custom data center solutions, please contact us:

Website: <https://www.yoahorroenergia.es>

Email: hello@yoahorroenergia.es

Phone: +233 54 318 7269

Address: Plot 28, Spintex Road, Accra, Greater Accra, Ghana

This document is for informational purposes only. Specifications subject to change without notice.

