

How to select the number of circuits for a distribution box



Overview

Small homes ($\leq 90\text{m}^2$ / $\sim 1,000$ sq ft) : 16–20 circuits (covers basic lighting, standard outlets, and 1–2 wall-mounted air conditioners). Just plug in your wattage and voltage—let it handle the decimals. You're not just calculating numbers—you're designing a system that matches how you live. What size distribution box do you need for a house?

How do you know which circuit breaker to use?

Can you add more breakers later?

Why do you need GFCI or AFCI breakers?

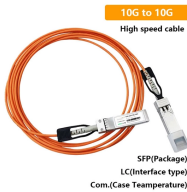
Choosing the right size and setup for your distribution box keeps your electrical system safe and working well. You lower the. Choosing the right distribution box involves matching its size to your circuit needs, ensuring key features like material and safety compliance, and selecting appropriate materials for its environment. Think of adding a kitchen appliance, air

conditioning or charging station for your electric car. Dividing incoming electrical power from the main supply into subsidiary circuits is the.

How to select the number of circuits for a distribution box



The amperage and circuit capacity of your distribution box are critical factors. You need to ensure that the box can handle the total load of all the circuits you plan to connect to it.



Several factors influence the size of the distribution box you need: Number of Circuits: This is the most basic starting point. You need to count how many individual circuits your application ...



From residential 100-amp panels to massive 600 amp main distribution panels in commercial facilities, this comprehensive guide will help you understand distribution board types, ...



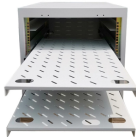
Recalling this basic information is necessary to determine the exact number of breakers required in a panel board, load center, or distribution board. The available voltage levels in a single ...



This guide provides information on how to select the appropriate Distribution Box for Electric project. If you have any questions about distribution boxes, please feel free to contact us.



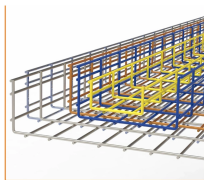
Learn how to choose the right home distribution box with our expert guide. Compare circuit capacity, IP ratings, breaker types & avoid common mistakes.



Choose the right size and setup for multiple circuit breakers in your distribution box to ensure safety, code compliance, and room for future upgrades.



When installing or renovating the electrical system in your home, the distribution box plays a crucial role. It neatly distributes the current over different circuits, so that your devices can work without any ...



Start with Your Household Needs . The number of circuits (or “ways”) your box needs depends on your home's size and appliance usage: Small homes ($\leq 90\text{m}^2$ / $\sim 1,000$ sq ft) : 16-20 ...



That's what happens when you overload circuits. But with some simple math and planning (don't worry, we'll walk through it!), you can design a system that works smoothly even when you're running all the ...

Contact Us

For more information, pricing, or custom data center solutions, please contact us:

Website: <https://www.yoahorroenergia.es>

Email: hello@yoahorroenergia.es

Phone: +233 54 318 7269

Address: Plot 28, Spintex Road, Accra, Greater Accra, Ghana

This document is for informational purposes only. Specifications subject to change without notice.

