

How to secure a cable tray that is too high



How to secure a cable tray that is too high



Equipped with a removable **Mounting Plate** inside the enclosure, enabling customized drilling and secure component mounting.

To be on the safe side, always get supports that will support more weight than you currently have. The general rule is to increase the safety margin by 25%. This additional strength ...



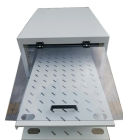
Learn common methods for connecting cable trays safely and efficiently. Our guide covers splice plates, quick-connects, and key tips for secure electrical cable management.



Discover the best fixing and mounting options for cable trays and wire mesh basket trays. CMW shares tips for efficient cable management.



Proper planning for installing cable tray includes calculations based on loading, support systems, cable/wire fill and spacing, conductor types, securing of the cables and wire, and proper grounding ...



The acclaimed Griplock® Cable Suspension System lets you adjust the height of each suspension point in seconds without tools, cutting hours out of normal installation times.



Discover efficient cable tray support structures for optimal cable management. Learn about hanger, wall-mounted, and Unistrut systems for safer installations.



Use the right cable tray conduit clamps and brackets for wall, ceiling, or floor support. Make sure supports are spaced properly, typically 1.5 to 3 meters apart, depending on tray type and ...



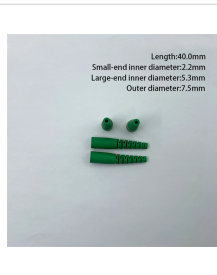
Installing a cable tray system requires careful planning to ensure it can support the weight of the cables and adheres to electrical safety codes. Here is a step-by-step guide on how to install a ...



The acclaimed Griplock® Cable Suspension System lets you adjust the height of each suspension point in seconds without tools, cutting hours out of normal ...



This guide covers the critical steps, from selecting the right electrical cable tray and performing accurate cable fill calculations to managing a safe cable pull through and ensuring all bonding and grounding ...



Cable trays must be adequately supported to carry the weight of cables plus any additional loads (such as snow or ice for outdoor installations). Use supports (wall brackets, trapeze ...

Contact Us

For more information, pricing, or custom data center solutions, please contact us:

Website: <https://www.yoahorroenergia.es>

Email: hello@yoahorroenergia.es

Phone: +233 54 318 7269

Address: Plot 28, Spintex Road, Accra, Greater Accra, Ghana

This document is for informational purposes only. Specifications subject to change without notice.

