

How to quickly estimate the price of a distribution box



Overview

Typical per-breaker costs range from \$5 to \$25 for standard units, plus installation labor if add-ons are required. A mini formula note: data-formula="labor_hours × hourly_rate"> Key price variables include amperage, panel type, and wiring complexity. So, how to estimate the price of the distribution box?

The following article will provide you with step-by-step analysis and recommendations to make it easier for you to make a decision when making a purchase. If you plan to purchase a distribution box, it is crucial to understand how to determine. Buyers typically pay a broad range for replacing a distribution box, driven by box size, amperage, wiring runs, and local labor rates. This article outlines the cost factors, price ranges, and practical budgeting advice for a U.

How to quickly estimate the price of a distribution box



That's where our Electric Panel Cost Calculator comes into play. This simple tool helps homeowners, electricians, and contractors quickly estimate the expected expense by inputting a few ...



We'll have to walk quickly to get there on time. Quickly now, you two, daddy's waiting in the car!



The following sample estimate illustrates the order in which materials are organized, allowing the estimate to act as a material release schedule to monitor and control the job.



When you do something quickly, you do it really fast — like when you quickly eat breakfast so you won't be late to school. The adverb quickly can describe any action that's done at great speed.



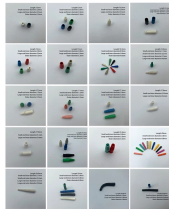
Definition of quickly adverb in Oxford Advanced Learner's Dictionary. Meaning, pronunciation, picture, example sentences, grammar, usage notes, synonyms and more.



Calculation method of distribution box: $A = (\sum B + C) * K$
 A: Distribution box price
 B: Total price of electronic components
 C: Distribution box price (six-sided area and *130 USD)
 K: coefficient ...



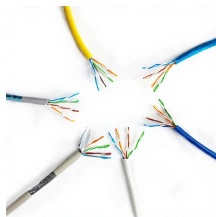
So, how to estimate the price of the distribution box? The following article will provide you with step-by-step analysis and recommendations to make it easier for you to make a decision when making a ...



Discover the full meaning and usage of "quickly" in this comprehensive glossary entry. Explore its etymology, definitions, synonyms, antonyms, and diverse examples, from literature to ...



QUICKLY definition: with speed; rapidly; very soon. See examples of quickly used in a sentence.



Do you recommend this business? What's the vibe? Got a question about Quickly? Ask the Yelp community!



The Price Landscape: Breaking Down the Costs
 When you start looking for a distribution box, you'll quickly realize the price range is wider than a highway. You might find a small plastic unit for the ...



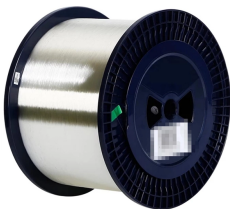
Explore the complete breakdown of distribution box costs, including safety features, scalability options, and operational benefits. Learn how to maximize your investment in electrical distribution systems.



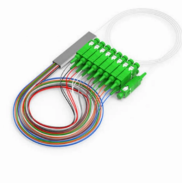
QUICKLY definition: with speed; rapidly; very soon | Meaning, pronunciation, translations and examples



The meaning of QUICKLY is in a quick manner. How to use quickly in a sentence.



This article outlines the cost factors, price ranges, and practical budgeting advice for a U.S. audience. The price depends on electrical code upgrades, permit needs, and whether upgrades require panel ...



Define quickly. quickly synonyms, quickly pronunciation, quickly translation, English dictionary definition of quickly. adj. quick·er, quick·est 1. Moving or functioning rapidly and energetically; speedy: an ...



The difference between the adverbial forms quick and quickly is frequently stylistic. Quick is more often used in short spoken sentences, especially imperative ones: Come quick!



Junction box costs range from low-price indoor models (\$10-\$60) to weatherproof units (\$70-\$450), with installation averaging \$100-\$300 depending on location and materials.



Typical cost ranges for replacing a distribution box or service panel in the United States vary widely based on panel size, amperage, labor, and whether a full service upgrade is needed.



Budget planning tips include requesting itemized quotes, verifying permit requirements, and confirming pull permits are handled by the contractor. Consider whether a full upgrade is ...

Contact Us

For more information, pricing, or custom data center solutions, please contact us:

Website: <https://www.yoahorroenergia.es>

Email: hello@yoahorroenergia.es

Phone: +233 54 318 7269

Address: Plot 28, Spintex Road, Accra, Greater Accra, Ghana

This document is for informational purposes only. Specifications subject to change without notice.

