

## How to open the hole in the distribution box



### Overview

Knowing how to knock out holes safely keeps your electrical work neat, code-compliant, and professional-looking. You'll see round, slightly raised circles molded into the plastic. Choose the one nearest to where your cable or. Think of your distribution box as the air traffic controller of your septic system. After waste leaves your septic tank, this unassuming junction box: Most D-boxes are made from durable concrete, tough plastic, or fiberglass - materials chosen to withstand decades buried in corrosive soil. Spreading the effluent dose over all parts of the syste maintains a relatively low soil loading rate and provides better effluent treatment. Distribution boxes also provide a readily accessible means of locating. How do I properly open these cable holes?

Got these cable holes in a metal Tripp Lite rack I acquired but they're all welded shut, how does one open these?

Hammer and lots of banging?

They look like electrical panel knockouts. Just tap from this side with a

screwdriver and a hammer. With the right information and technique, you should be able to remove a "KO" from electrical panels and other electrical.

## How to open the hole in the distribution box



If the D-box or septic diversion box is leaking, smells, or is tipped, clogged, or otherwise not working this article describes how to diagnose & fix the trouble.



There are a few options for repairing a broken screw hole in a plastic electrical box. My standard choice was to replace the electrical box. The G-Clip gives me the option to repair it if ...



Simply insert the head of the pliers into the hole and twist until has completely circumscribed the opening. The metal is usually soft enough for the pliers to dull any burrs that may be present.



Knocking out a hole in a plastic electrical box is simple—but it rewards patience and finesse. With a steady hand, light pressure, and the right tool, you'll have a clean, perfect opening ...



Most D-boxes are made from durable concrete, tough plastic, or fiberglass - materials chosen to withstand decades buried in corrosive soil. Inside, you'll find inlet and outlet ports, leveling ...



Just need to break the paint on the edges, and those two tabs. As others are saying, you just take a flat blade and use it like a chisel to hit the side without the tabs. The metal will bend ...



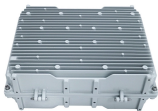
The key takeaway is clear: never drill a hole in a junction box unless you are absolutely certain it's safe and compliant with local regulations. If you're unsure, consult a qualified electrician. ...



Join me on a rare sunny day as I take you step-by-step through how to locate, expose, and inspect a septic distribution box when it's not visible at the surface.



SEPTIC TANK EFFLUENT DISTRIBUTION BOXES INSTALLATION PROCEDURE AND APPROVED MODELS as Septic Tanks, Distribution Boxes, and Chamber Leaching Systems Approved for Use in ...



Learn how to safely and effectively drill a hole in a junction box with this step-by-step guide. Perfect for DIYers and electricians.

## Contact Us

For more information, pricing, or custom data center solutions, please contact us:

Website: <https://www.yoahorroenergia.es>

Email: [hello@yoahorroenergia.es](mailto:hello@yoahorroenergia.es)

Phone: +233 54 318 7269

Address: Plot 28, Spintex Road, Accra, Greater Accra, Ghana

This document is for informational purposes only. Specifications subject to change without notice.

