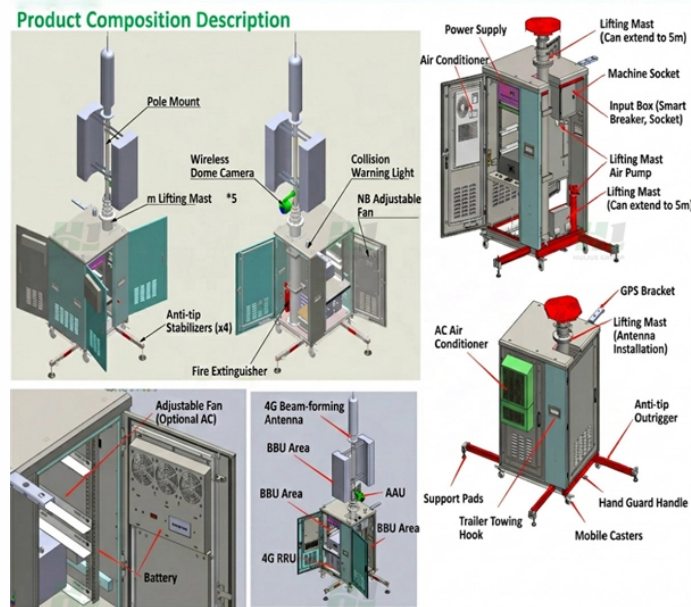


How to open the LCDKVM switcher



Overview

Power on the switch and you can start to use it. Note: If extra console is required, connect the monitor, mouse, keyboard to the relevant ports on the KVM switch. In a domestic environment this product may cause radio interference in which case the user may be required to take adequate measures. This equipment has been tested and found to comply with the limits for a Class A digital device, pursuant to Part 15 of the FCC. Want to Part 15 of the FCC Rules. This equipment generates, uses and can radiate radio frequency energy and, if not installed and used in accordance. Therefore, Schneider Electric assumes no liability for damages, violations of codes, improper installation, system failures, or any other problems that could arise based on the use of this Publication. The information contained in this Publication is provided as is and has been prepared solely for. KL1116 User Manual About This Manual This User Manual is provided to help you get the most from your KL1116 system. It covers all aspects of installation, configuration and operation.

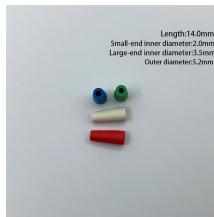
How to open the LCDKVM switcher



The CS1716A KVM switch is a control unit that allows access to multiple computers from a single PS/2 or USB console (keyboard, mouse, and monitor). A single CS1716A can control up to 16...



Invoking Auto Scan Mode causes the KL1116 to switch the KVM focus among all the active KVM Ports that are accessible to the currently logged on user at regular intervals.



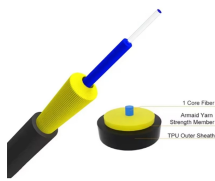
Disconnect the KVM switch from its position in the series. Connect the KVM switch to the CHAIN OUT port of the KVM switch which will now be ahead of it in the series and to the CHAIN IN port of the ...



Check to make sure that all of the components are present and in good order. If anything is missing, or was damaged in shipping, contact your dealer. Read this manual thoroughly and follow the ...



Make sure the KVM console has been connected to the ground. Connect the KVM adapter to the PC(or Server) and KVM console via Cat5e cable. Connect to Internet via LAN port on the console. Connect ...



An extra console port is provided on the rear panel to manage the LCD KVM switch from an external console (monitor, keyboard, and mouse) up to 20 meters away. For added convenience ...



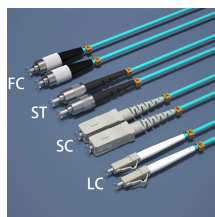
Read this manual thoroughly and follow the installation and operation procedures carefully to prevent any damage to the switch or to any other devices on the KL1116 installation.



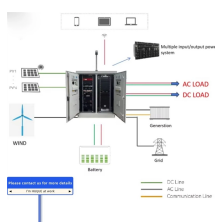
LCD KVM Consoles and Switches are space-optimizing KVM solutions for server rooms and are specifically designed for short rack applications, including limited-space telecoms, broadcasting, and ...



Featuring a space-saving, streamlined approach to KVM switching technology by integrating an LCD panel, full keyboard, and touchpad into a 1U rack-mountable sliding housing. Serving as the front ...



Connect the KVM switch to the CHAIN OUT port of the KVM switch which will now be ahead of it in the series and to the CHAIN IN port of the KVM switch that will follow it in the series.



In this video, we install the KVM console step by step and explain the multiple functions of the LCD KVM console. If you like this video, please don't forget to subscribe MT-VIKI!

Contact Us

For more information, pricing, or custom data center solutions, please contact us:

Website: <https://www.yoahorroenergia.es>

Email: hello@yoahorroenergia.es

Phone: +233 54 318 7269

Address: Plot 28, Spintex Road, Accra, Greater Accra, Ghana

This document is for informational purposes only. Specifications subject to change without notice.

