

How to install the fiber distribution box on the pole

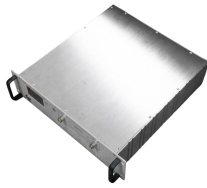


Overview

Pole Mounting: If mounting on a pole, use the provided pole mounting kit or metal clamps and secure the box at a manageable height. **Rack Mounting:** Some FDBs are designed for rack installation. Slide the box into the rack and use screws to secure it in place, following the. FODB-8 is installed with adapters, splitters, drop cable patchcords, pole bandings, and fiber cable slack storage. FTTH fiber optic distribution box FODB-8 other called gel sealed FTTH termination box designed to terminate feeding optical cable and connect last mile cables as fiber optical patch. **Installation:** Clearfield highly recommends the the installation of a vapor barrier beneath the crushed rock floor of the excavated area. It is recommended to use a minimum of three to six (3" - 6") inches of crushed rock to prevent subsidence over time. It facilitates fiber splicing, splitting, and distribution while providing robust protection and efficient management for. Here's a general guide on how to install a fiber distribution box: **Choose the Right Location:** The fiber distribution box should be installed in a location that is easily accessible for maintenance, secure, and protected from environmental hazards. The kit consists of various mounting brackets, shown in Figure 1, that are used to. desire to become a Clearfield

partner. Designed for the outside plant environment, these cabinets provide a single distribution point to deploy FTTH in urban or dense neighborhoods.

How to install the fiber distribution box on the pole



The enclosure is designed with dedicated feeder cable ports, allowing secure and organized installation of incoming feeder cables without compromising the structural integrity of the enclosure.



Installing a fiber distribution box (FDB), also known as a fiber optic distribution box or fiber splice box, is an essential part of managing and protecting fiber optic cables and connections in ...



The installation of an optical fiber distribution box is a multi-step process, and the following is a detailed installation guide:



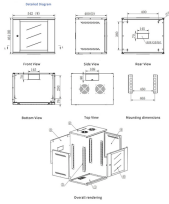
You are watching the video tutorial of aerial installation of fiber optic termination box FODB-8. Visit our web for more information: <https://>



Install the new bracket by aligning the holes in the bracket with the tapped holes on the bulkhead and inserting the bracket tabs into the slots of the bulkhead, then secure with screws.



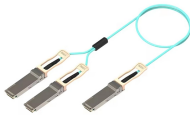
Discover the full process behind the construction of a fiber network — from planning and permits to the final fiber-to-the-home connection.



This document provides installation instructions for the ADC Fiber Distribution Hub FONS Pole-Mount Kit. The kit is designed for securing the FONS Gen 2 or Gen 3 Fiber Distribution Hub (FDH) cabinet ...



View and Download Clearfield FieldSmart 144 installation manual online. Fiber Distribution Hub (FDH) 144, 288, 576 & 864 Port PON Cabinets. FieldSmart 144 switch pdf manual download. Also for: ...



Deploying fiber above ground on poles or towers removes the need for underground digging and is particularly useful when the ground is uneven, rocky or both. Aerial installation is generally much less ...



Feeder and distribution cables are routed in and out the back of the cabinet and transition up the pole for aerial applications or may route from the bottom of the cabinet for buried applications.

Contact Us

For more information, pricing, or custom data center solutions, please contact us:

Website: <https://www.yoahorroenergia.es>

Email: hello@yoahorroenergia.es

Phone: +233 54 318 7269

Address: Plot 28, Spintex Road, Accra, Greater Accra, Ghana

This document is for informational purposes only. Specifications subject to change without notice.

